

CERTIFIED CORNER RECORDATION

Corner 1/4 Secs. 35 & 2 T. 28 N. R. 30 W. P.M.M. LINCOLN County

I. Record:

1900 original record by Burton S. Adams: 40.00 chains, Set a limestone, 18x8x6 ins., 12 ins. in the ground, for 1/4 sec. cor., marked 1/4 on N. face. From which:

A fir 15 ins. diam., bears S86°E, 16 lks. dist., marked 1/4 S2 BT.

A fir 5 ins. diam., bears N39°45'W, 42 lks. dist., marked 1/4 S35 BT.

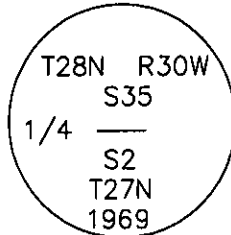
1969 BLM Remonumentation by Roy G. Leedy: The 1/4 sec. cor. of secs. 2 and 35, on the S. bdy. of the Tp., monumented with a limestone, 16x8x6 ins., firmly set, mkd. 1/4 on the N. face, and witnessed by the remains of the original bearing trees:

A stump hole, bears S86°E, 16 lks. dist., with fallen log mkd. 1/4 S2 BT lying alongside.

A fir 12 ins. diam., bears N39 3/4°W, 42 lks. dist., marked with an overgrown blaze.

At the corner point:

Set an iron post, 30 ins. long, 2 1/2 ins. diam., 24 ins. in the ground, with brass cap mkd.



From which:

A fir 11 ins. diam., bears S38 1/2°W, 14 lks. dist., marked with a healed face

1991 Certified Corner Recordation by Richard G. Goacher: Original record unknown. Found BLM brass cap. Found bearing trees:

A fir 13 ins. diam., bears N38°W, 27.9 ft. dist., with visible blazes and BT tags.

A rotten stump 22 ins. diam., which bears S87°E, 13.0 feet.

A fir 9 ins. diam., bears S38°30'W, 9.0 ft. dist., with visible blazes and BT tags.

II. Found a 2 1/2 in. diam iron pipe, 3 ins. above ground with a 3 1/4 in. diam. BLM brass cap marked as shown above, from which:

A fir 11 ins. diam., bears S38°W, 8.9 ft dist., marked with a healed face

A fir 11 ins. diam., bears N40°W, 27.7 ft dist., marked with a healed face

III. Painted red bands around found bearing trees and attached Bearing Tree and Land Survey Monument signs to the bearing trees.

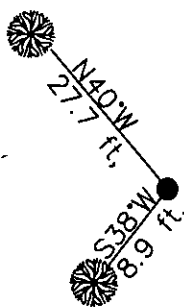
Date of Fieldwork: 9/18/2001

Survey crew: Steve Boyer, Tom Hommel

Magnetic declination: 20° East assumed

Equipment used: Hand compass and loggers tape

U.S. Forest Service, Supervisors Office, 1101 Hwy. 2 West, Libby, MT 59923 (406) 293-6211



SKETCH OF CORNER

NOT TO SCALE

CERTIFICATION

I, Steven A. Boyer REGISTERED
certify the information shown herein is true and correct.

Signature of Surveyor
Roger O. Green
I, Roger O. Green REGISTERED
certify that this Corner Record correctly reflects the work performed by me or under my direction in compliance with the "Corner Recordation Act" (Mont. Code Annotated, § 82-2-201, MCA).
Signature of Surveyor & Seal

Date: 9/18/2001 Reg. No. 13769LS

Employer: U. S. Forest Service

Office of Clerk and Recorder, County of Lincoln. This "corner

record" was filed for record on Feb 19, 2002

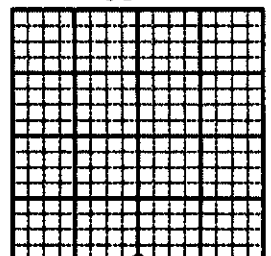
was noted on the cross-index plat and is assigned page No. 10549 in

book No. Coral M. Cummings By DB
County Official

Cross Index No. Z-19 T. 28N. R. 30W. P.M., MT

Adopted July 1, 1981, Montana Board of Professional Engineers & Land Surveyors

Sec. 35



• corner this sheet