

CERTIFIED CORNER RECORDATION

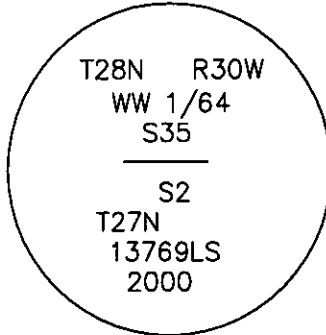
Corner W W 1/64 S35 T. 28 N. R. 30 W. P.M.M. LINCOLN County

I. Record: No previous survey.

II. Found: No evidence found.

III. At the corner point

Set an iron rebar, 24 ins. long, 5/8 ins. diam., 24 ins. in the ground, with a 3 1/4 ins. diam., aluminum U.S.F.S cap mkd. as shown:



From which:

- A spruce, 11 ins. diam., bears N29°W, 13.7 ft. dist., mkd. WW 1/64 S35 BT.
- A spruce, 16 ins. diam., bears S52°W, 4.4 ft. dist., mkd. WW 1/64 S2 BT.

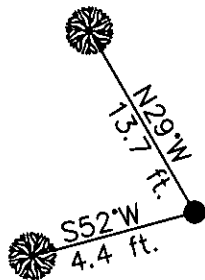
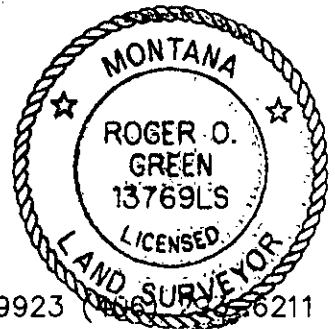
Set 2, 6ft. galvanized steel posts, 3 ft. North and East of the corner, with Property Boundary and Land Survey Monument decals attached. Painted red bands around BT's and attached Bearing Tree and Land Survey Monument signs.

Survey crew: Steve Boyer, Tom Hommel

Magnetic declination: 20° East assumed

Equipment used: Hand compass and loggers tape

U. S. Forest Service, Supervisors Office, 1101 Hwy. 2 West, Libby, MT. 59923 (406) 836-6211



SKETCH OF CORNER

No Scale



CERTIFICATION

I, Steven A. Boyer 9750LS
certify the information shown herein is true and correct.

Steven A. Boyer
Signature Ground Party Chief

I, Roger O. Green
certify that this Corner Record correctly represents work performed by me or under my direction in compliance with the "Corner Recordation Act" (70-22-101, et seq., M.C.A.)

Roger O. Green
Signature of Surveyor & Seal

Date: 1/24/2001 Reg. No. 13769LS

Employer: U. S. Forest Service

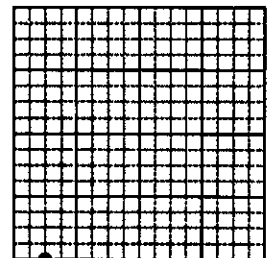
Office of Clerk and Recorder, County of Lincoln This "corner

record" was filed for record on Jan 25, 2001

was noted on the cross-index plat and is assigned page No. 10524, in

book No. _____ Coral M. Cummings
County Official

Sec. 35



• corner this sheet

Cross Index No. Z-17.5 T. 28N. R. 30W. P.M., MT