

# CERTIFIED CORNER RECORDATION

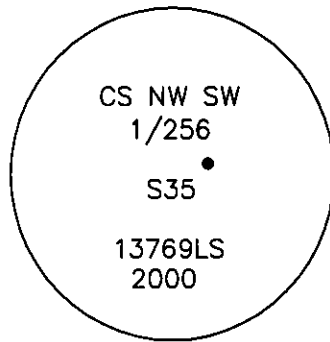
Corner CS-NW-SW 1/256 S35 T. 28 N. R. 30 W. P.M.M. LINCOLN County

I. Record: No previous survey.

II. Found: No evidence found.

III. At the corner point

Set an iron rebar, 24 ins. long, 5/8 ins. diam., 36 ins. in the ground, with a 3 1/4 ins. diam., aluminum U.S.F.S cap mkd. as shown:



From which:

A fir, 12 ins. diam., bears N85°E, 157.6 ft. dist., mkd. CSNWSW 1/256 S35 BT.

A fir, 18 ins. diam., bears N48°E, 160.6 ft. dist., mkd. CSNWSW 1/256 S35 BT.

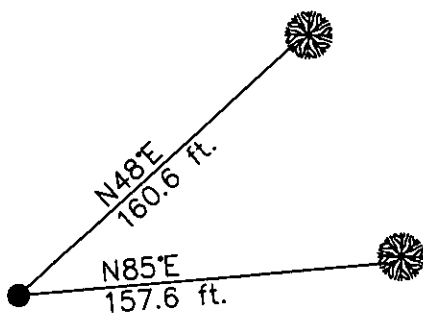
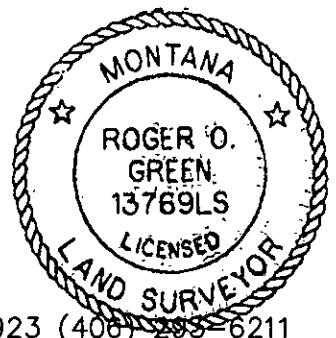
Set a 2, 6 ft. galvanized steel guard posts 3 ft. north and east with Property Boundary and Land Survey Monument decals attached. Painted red bands around BT's and attached Bearing Tree and Land Survey Monument signs.

Survey crew: Steve Boyer, Tom Hommel

Magnetic declination: 20° East assumed

Equipment used: Hand compass and loggers tape

U. S. Forest Service, Supervisors Office, 1101 Hwy. 2 West, Libby, MT. 59923 (406) 293-6211



SKETCH OF CORNER



NOT TO SCALE

## CERTIFICATION

I, Steven A. Boyer 9750LS  
certify the information shown herein is true and correct.

Steven A. Boyer  
Signature Ground Party Chief

I, Roger O. Green  
certify that this Corner Record correctly represents work performed by me or under my direction in compliance with the "Corner Recordation Act" (78-712-101, et seq., M.C.A.)

Roger O. Green  
Signature of Surveyor & Seal

Date: 1/24/2001 Reg. No. 13769LS

Employer: U. S. Forest Service

Office of Clerk and Recorder, County of Lincoln This "corner

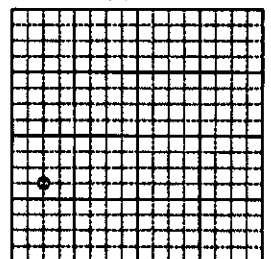
record" was filed for record on Jan 25, 2001

was noted on the cross-index plat and is assigned page No. 10518, in

book No. \_\_\_\_\_

Coral M. Cumming ByOB  
County Official

Sec. 35



• corner this sheet

Cross Index No. X.75-17.5 T. 28N. R. 30W. P.M., MT

Adopted July 1, 1981, Montana Board of Professional Engineers & Land Surveyors