

CERTIFIED CORNER RECORDATION

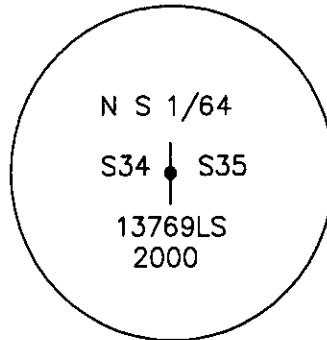
Corner N-S 1/64 Sec.s 34 & 35 T. 28 N. R. 30 W. P.M.M. LINCOLN County

I. Record: No previous survey.

II. Found: No evidence found.

III. At the corner point

Set an iron rebar, 24 ins. long, 5/8 ins. diam., 40 ins. in the ground, with a 3 1/4 ins. diam., aluminum U.S.F.S cap mkd. as shown:



From which:

An iron rebar, 24 ins. long, 5/8 ins. diam., 22 ins. in the ground, for a reference monument, bears S38°54'36"W, 91.15 ft. dist., with a 3 1/4 ins. diam., aluminum U.S.D.A. cap mkd. RM 2.

An iron rebar, 24 ins. long, 5/8 ins. diam., 22 ins. in the ground, for a reference monument, bears S81°09'53"W, 88.77 ft. dist., with a 3 1/4 ins. diam., aluminum U.S.D.A. cap mkd. RM 1.

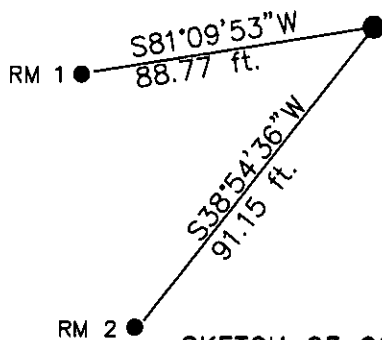
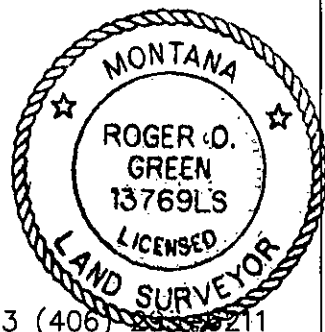
NOTE: As this corner falls in a hay field there were no trees within limits for bearing trees.

Survey crew: Steve Boyer, Tom Hommel

Magnetic declination: 20° East assumed

Equipment used: Hand compass and loggers tape

U. S. Forest Service, Supervisors Office, 1101 Hwy. 2 West, Libby, MT. 59923 (406) 233-5211



SKETCH OF CORNER

NOT TO SCALE

CERTIFICATION

I, Steven A. Boyer 9750LS
certify the information shown herein is true and correct.

Steven A. Boyer
Signature Ground Party Chief

I, Roger O. Green
certify that this Corner Record correctly represents work performed by me or under my direction in compliance with the "Corner Recordation Act" (70-2-101, et seq., M.C.A.)

Roger O. Green
Signature of Surveyor & Seal

Date: 1/24/2001 Reg. No. 13769LS

Employer: U. S. Forest Service

Office of Clerk and Recorder, County of Lincoln This "corner

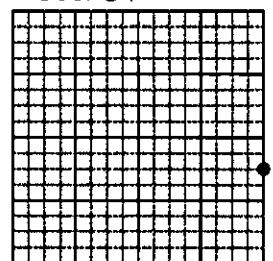
record" was filed for record on Jan 25, 2001

was noted on the cross-index plat and is assigned page No. 10517 in

book No. _____

Coral M. Cumming By RB
County Official

Sec. 34



• corner this sheet

Cross Index No. X.5-17 T. 28N. R. 30W. P.M., MT

Adopted July 1, 1981, Montana Board of Professional Engineers & Land Surveyors