

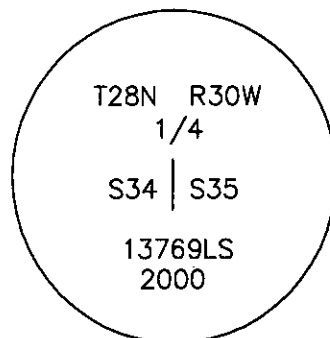
CERTIFIED CORNER RECORDATION

Corner 1/4 Secs. 34 & 35 T. 28 N. R. 30 W. P.M.M. LINCOLN County

I. Record: 1900 original record by Burton S. Adams: 40.00 chains, "Set a fir post 3 ft. long, 6 ins. square, 24 ins. in the ground, for 1/4 sec. cor., marked 1/4 S. 34, on W. face and 35 on E. face. The corner falls in a swamp and pits are impracticable. There are no suitable bearing trees within reasonable limits."

II. Found: No evidence found.

III. At the corner point
The position determined by proportionate distance, set an aluminum post, 30 ins. long, 2 1/2 ins. diam., 46 ins. in the ground, with a 3 1/4 ins. diam., aluminum U.S.F.S cap mkd. as shown:



From which:

An iron rebar, 24 ins. long, 5/8 ins. diam., set 22 ins. in the ground, for a reference monument, bears S0°52'47"W, 852.54 ft. dist., with a 1 1/4 ins. diam., plastic cap mkd. "F.S. CONTROL".

An iron rebar, 24 ins. long, 5/8 ins. diam., set 22 ins. in the ground, for a reference monument, bears S19°08'59"W, 540.10 ft. dist., with a 1 1/4 ins. diam., plastic cap mkd. "F.S. CONTROL".

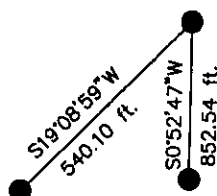
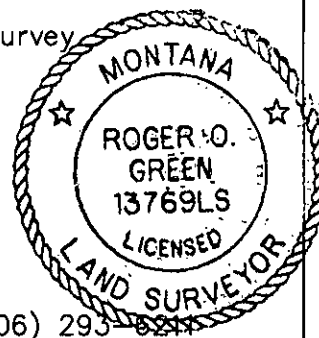
Set 2, 6 ft. galvanized steel guard posts 1 ft. east and west, with Land Survey Monument decals attached.

Survey crew: Steve Boyer, Tom Hommel

Magnetic declination: 20° East assumed

Equipment used: Hand compass and loggers tape

U. S. Forest Service, Supervisors Office, 1101 Hwy. 2 West, Libby, MT. 59923 (406) 293-6844



SKETCH OF CORNER

NOT TO SCALE

CERTIFICATION

I, Steven A. Boyer 9750LS
certify the information shown herein is true and correct.

Steven A. Boyer
Signature Ground Party Chief

I, Roger O. Green
certify that this Corner Record correctly represents work performed by me or under my direction in compliance with the "Corner Recordation Act" (70-22-101, et seq., M.C.A.)

Roger O. Green
Signature of Surveyor & Seal

Date: 1/24/2001 Reg. No. 13769LS

Employer: U. S. Forest Service

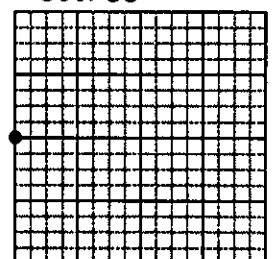
Office of Clerk and Recorder, County of Lincoln This "corner

record" was filed for record on Jan 25, 2001

was noted on the cross-index plat and is assigned page No. 10513, in
book No. Coral M. Cumming By EB

County Official

Sec. 35



• corner this sheet

Cross Index No. X-17 T. 28N. R. 30W. P.M., MT

Adopted July 1, 1981, Montana Board of Professional Engineers & Land Surveyors