

CERTIFIED CORNER RECORDATION

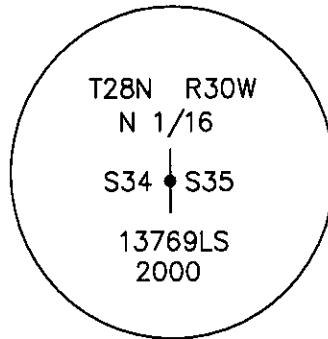
Corner N 1/16 Secs. 34 & 35 T. 28 N. R. 30 W. P.M.M. LINCOLN County

I. Record: No previous survey.

II. Found: No evidence found.

III. At the corner point

Set an iron rebar, 24 ins. long, 5/8 ins. diam., 36 ins. in the ground, with a 3 1/4 ins. diam., aluminum U.S.F.S cap mkd. as shown:



From which:

A fir, 17 ins. diam., bears N45°E, 75.6 ft. dist., mkd. N 1/16 S35 BT.

A fir, 11 ins. diam., bears N78°E, 47.9 ft. dist., mkd. N 1/16 S35 BT.

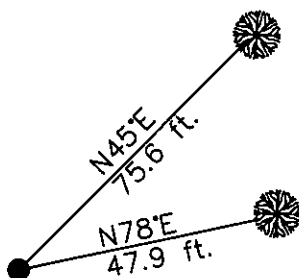
Painted red bands around BT's and attached Bearing Tree and Land Survey Monument signs.

Survey crew: Steve Boyer, Tom Hommel

Magnetic declination: 20° East assumed

Equipment used: Hand compass and loggers tape

U. S. Forest Service, Supervisors Office, 1101 Hwy. 2 West, Libby, MT. 59923 (406) 293-6211



SKETCH OF CORNER

NOT TO SCALE

CERTIFICATION

I, Steyen A. Boyer 13769LS
 certify the information above herein is true and correct.

Roger O. Green
 Signature Ground Party

I, Roger O. Green 13769LS
 certify that this Corner Record correctly represents work performed by me or under my direct supervision in compliance with the "Corner Recordation Act" (70-22-101 et seq., M.C.A.)

Roger O. Green
 Signature of Surveyor & Seal

Date: 1/24/2001 Reg. No. 13769LS
 Employer: U. S. Forest Service

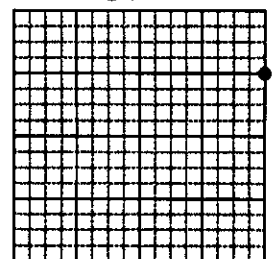
Office of Clerk and Recorder, County of Lincoln This "corner

record" was filed for record on Jan 25, 2001

was noted on the cross-index plat and is assigned page No. 10509, in
 book No. Coral M. Cumming By RB

County Official

Sec. 34



• corner this sheet

Cross Index No. W-17 T. 28N. R. 30W. P.M., MT

Adopted July 1, 1981, Montana Board of Professional Engineers & Land Surveyors