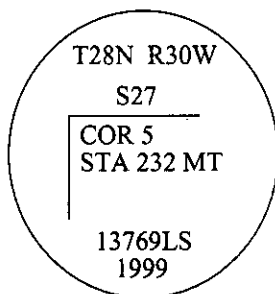


- CERTIFIED CORNER RECORDATION -

Corner STA 232 MT Cor. 5 Sec. 27 T. 28 N. R. 30 W. P.M., MT Lincoln County

- I. Creating original tract, no prior history.
- II. Creating original tract, no evidence to be found.
- III. At a point, on the North 1/16 line of Section 27, set Corner 5 of STA 232 MT, an aluminum rod, 30 ins. long, 3/4 in. diam., flush with the ground, with a 3 1/4 ins. diam. aluminum cap, mkd. as shown.



from which:

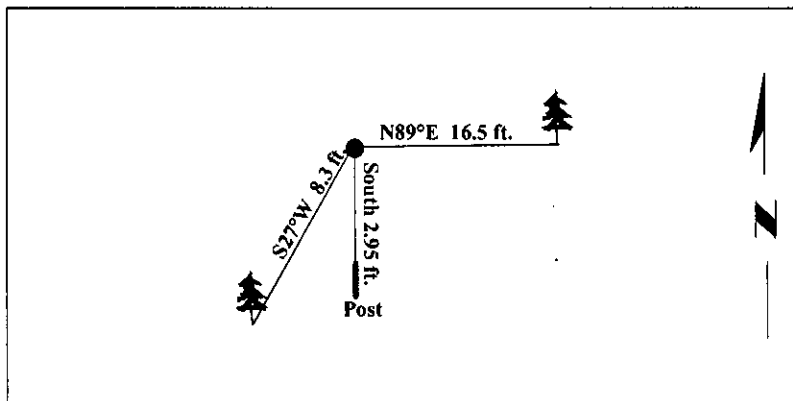
A fir, 13 ins. diam., bears N89°E, 16.5 ft. dist., scribed "COR 5 STA 232 BT".
A fir, 16 ins. diam., bears S27°W, 8.3 ft. dist., scribed "COR 5 STA 232 BT".

A 6 foot galvanized steel guard post, bearing South, 2.95 feet dist., with Land Survey Monument and Property Boundary decals affixed.

No bearing trees available.

*See Survey titled "Certificate of Survey, Otte, S.T.A. 232 MT", filed at Lincoln County Courthouse.

Magnetic Declination: 20° East



SKETCH OF CORNER

CERTIFICATION

I, Rex O. Rice
certify the information shown herein is true and correct.

Rex O. Rice

I, Roger O. Green
certify that this Corner Record correctly represents work performed by me or under my direction in compliance with the "Corner Recordation Act" (70-22-101, et seq.).

Roger O. Green
Signature of Surveyor & Seal

Date: 8/23/99

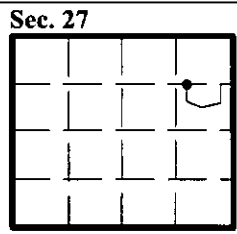
Reg. No.: 13769LS

Employer: U.S. FOREST SERVICE

MONTANA
ROGER O. GREEN
13769LS
LICENSED
LAND SURVEYOR

Office of Clerk and Recorder, County of Lincoln. This "corner record" was filed for record on 10/27/99 and was noted on the cross-index plat and is assigned page No. 10402 in book No. .

Coral M. Cummings
County Official



• - corner this sheet

Cross Index No. STA 232 MT Cor. 5 Sec. 27 T.28 N. R.30 W. P.M., MT