

CERTIFIED CORNER RECORDATION

Corner E 1/4 Cor. of Sec. 1 T. 28 N., R. 30 W., P.M.M. Lincoln County

Record :

1900 original GLO notes by Burton S. Adams:

"The point for 1/4 Corner, a rock 18x6 feet by 5 inches above ground. A "x" for exact corner point."

1916 retracement of the west boundary of T28N R29W PMM, by Armstrong.

Established the E 1/4 Corner for Section 1 with a limestone 16"x16"x12", 11 inches in the ground. Established two new Bearing Trees.

Found Evidence :

Found the stone set by Adams, the defaced tree and fir tree. (Section 6)
Found the stone set by Armstrong, line tree 2 feet north. (Section 1)

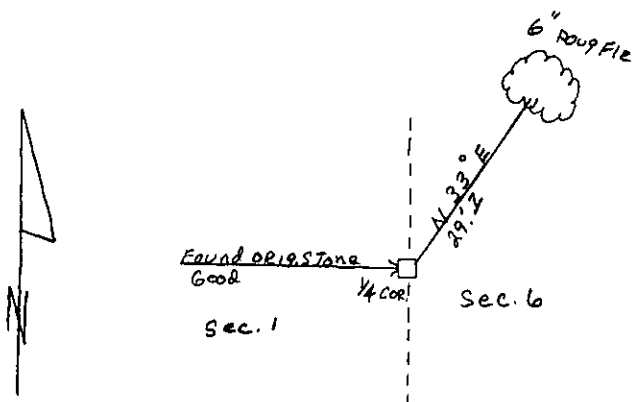
Perpetuation :

Established the following new Bearing Tree:

A Douglas Fir, 6 inches diam. DBH, bears N 33° E, 29.70 feet.

Painted red band around Bearing Tree and attached Bearing Tree and Land Survey Monument signs.

Magnetic Declination: 17° East



Sketch of Corner

CERTIFICATION

I, Ricky E. Shaver

certify the information shown herein is true and correct

Ricky E. Shaver
Signature of Ground Party Chief

I, Kenneth E. Davis

certify that this Corner Record correctly represents work performed by Me or under my direction in compliance with the "Corner Recordation Act"

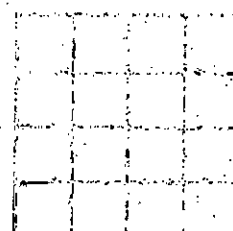
(70-22-101, et seq., M.C.A.)

Kenneth E. Davis
Signature of Surveyor & Seal

Date: 10-6-99 Reg. No. 4975-S

Employer: Davis Surveying, Inc.

Section



Office of Clerk and Recorder, County of Lincoln

This "corner record" was filed for record on 10-6-99

was noted on the cross-index plat and is assigned page No. 10349

in book No. Coral M. Cumming By OLB
County Official

Cross Index No. E 1/4 Cor. Sec. 1 T. 28 N., R. 30 W., PMM

• THIS CORNER