

**-CERTIFIED CORNER RECORDATION**

**Corner**    **1/4**                    **Secs.**    **34&3**                    **T.**    **28N**    **R.**    **30W**                    **P.M., MT**    **Lincoln**                    **County**

- I.    1900 G.L.O. Record by Burton S. Adams: Set a lime stone, 16x10x4 ins., 11 ins. in the ground for 1/4 sec. cor., mkd. "1/4" on the N. face.

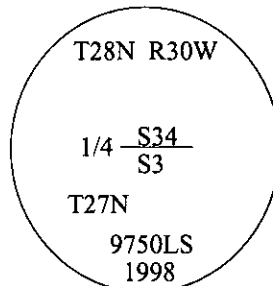
Established two bearing trees:

A pine, 5 ins. diam., bears S53°E, 25 lks. dist., mkd. "1/4 S3 BT".  
A pine, 6 ins. diam., bears N21°15'W, 17 lks. dist., mkd. "1/4 S34 BT".

- II.    Found a stone, 7x4 ins., firmly set, protruding 8 ins. above the ground, mkd. with "1/4" on N. face.  
from which:

A pine stump, bears N21°W, 11.2 ft. dist., with visible scribe. (GLO-record)  
No evidence of bearing tree in section 3.

- III.    In the position of the found stone, set an aluminum pipe, 30 ins. long, 2 1/2 ins. diam., 20 ins. in the ground, surrounded the 3 1/4 in. diam. aluminum cap with a collar of stone to top of cap, mkd. as shown.

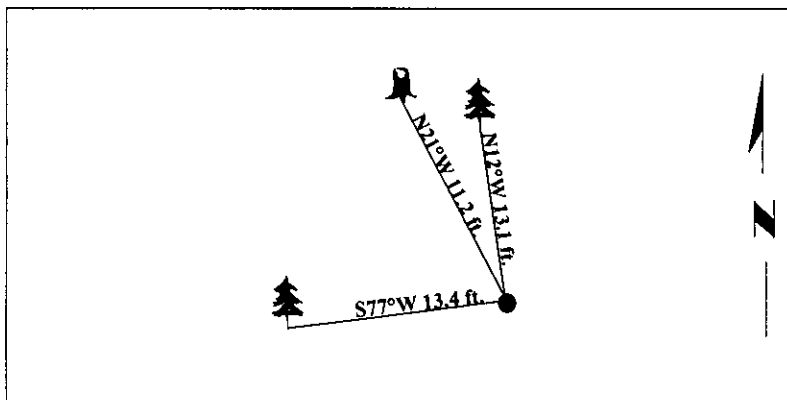


Established two new bearing trees:

A fir, 17 ins. diam., bears S77°W, 13.4 ft. dist., mkd. "1/4 S3 BT".  
A fir, 10 ins. diam., bears N12°W, 13.1 ft. dist., mkd. "1/4 S34 BT".

Buried original stone alongside the aluminum monument.  
Painted bearing trees and attached Land Survey Monument and Bearing Tree signs.

Magnetic Declination: 20° East

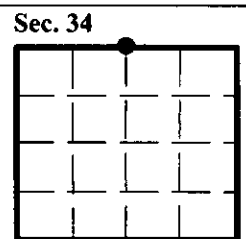


**SKETCH OF CORNER**

CERTIFICATION	
I, <u>Rex O. Rice</u>	
certify the information shown herein is true and correct.	
<u>Rex O. Rice</u>	
I, <u>Steven A. Boyer</u>	
certify that this Corner Record correctly represents work performed by me or under my direction in compliance with the "Corner Recordation Act" (70-22-101, et seq., M.S.A.)	
<u>Steven A. Boyer</u>	
Signature of Surveyor & Seal	
Date: <u>6/22/98</u>	
Reg. No.: <u>9750LS</u>	
Employer: <u>U.S. FOREST SERVICE</u>	

Office of Clerk and Recorder, County of Lincoln. This "corner record" was filed for record on 6-19-98 and was noted on the cross-index plat and is assigned page No. 10198 in book No. \_\_\_\_\_.

Coral M. Cumming B-EB  
County Official



● - corner this sheet

No.

Cross Index

2-15

T.

28N

R.

30W

P.M., MT