

-CERTIFIED CORNER RECORDATION

Corner **Sec. Cor.** **Secs.** **33,34,3,4** **T.** **28N** **R.** **30W** **P.M., MT** **Lincoln** **County**

- I. 1900 G.L.O. Record by Burton S. Adams: Set a granite stone, 16x10x8 ins., 11 ins. in the ground, for cor. cor. of secs. 3,4,33 and 34, mkd. with 3 notches on E. and W. edges.

Established four bearing trees:

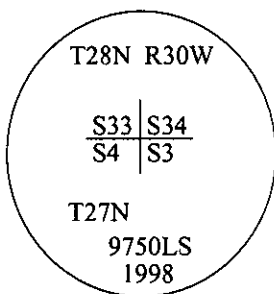
A fir, 5 ins. diam., bears N46°45'E, 44 lks. dist., mkd. "T28N R30W S34 BT".
A pine, 23 ins. diam., bears S19°15'E, 111 lks. dist., mkd. "T27N R30W S3 BT".
A pine, 24 ins. diam., bears S10°45'W, 94 lks. dist., mkd. "T27N R30W S4 BT".
A fir, 5 ins. diam., bears N58°W, 26 lks. dist., mkd. "T28N R30W S33 BT".

- II. Found a stone, 10x6 ins., firmly set, protruding 12 ins. above the ground, mkd. with 3 notches on E. and W. faces.

from which:

A fir, 21 ins. diam., bears N47°E, 29.0 ft. dist., with a healed face. (record)
A stump, 36 ins. diam., bears S19°E, 73.3 ft. dist., bottom of face evident. (record)
A stump, 33 ins. diam., bears S11°W, 62.0 ft. dist., no visible scribe. (record)
A broken fir stump w/ a 10 in. diam. fir log alongside, bears N58°W, 17.2 ft. dist., mkd. "T28N R30W S33 BT". (record)

- III. In the position of the found stone, set an aluminum pipe, 30 ins. long, 2 1/2 ins. diam., 18 ins. in the ground, with a 3 1/4 in. diam. aluminum cap, mkd. as shown.

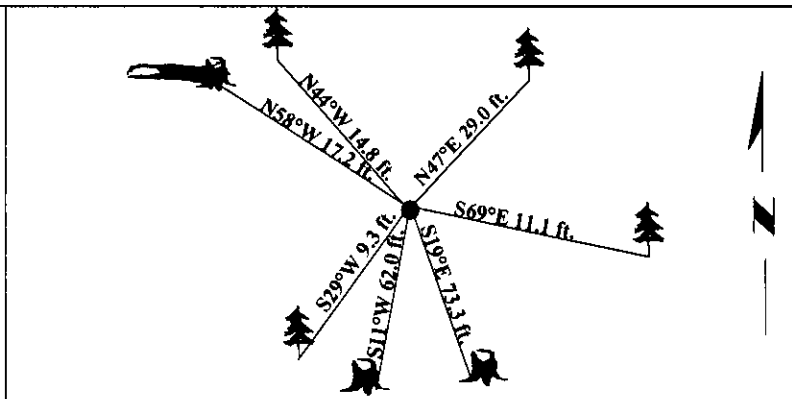


Established three new bearing trees:

A hemlock, 12 ins. diam., bears S69°E, 11.1 ft. dist., mkd. "T27N R30W S3 BT".
A fir, 14 ins. diam., bears S29°W, 9.3 ft. dist., mkd. "T27N R30W S4 BT".
A fir, 15 ins. diam., bears N44°W, 14.8 ft. dist., mkd. "T28N R30W S33 BT".

Built up a mound of stone to top and bury original stone alongside of the aluminum pipe.
Painted bearing trees and attached Land Survey Monument and Bearing Tree signs.

Magnetic Declination: 20° East



SKETCH OF CORNER

CERTIFICATION	
I, <u>Rex O. Rice</u> certify the information shown herein is true and correct.	
<u>Rex O. Rice</u>	
I, <u>Steven A. Boyer</u> certify that this Corner Record correctly represents work performed by me or under my direction in compliance with the Corner Recordation Act, (20-22-10), et seq., M.C.A.	
<u>Steven A. Boyer</u> Signature of Surveyor & Seal	
Date: <u>6/18/98</u>	
Reg. No.: <u>9750LS</u>	
Employer: <u>U.S. FOREST SERVICE</u>	

Office of Clerk and Recorder, County of Lincoln. This "corner record" was filed for record on 8-19-98 and was noted on the cross-index plat and is assigned page No. 10196 in book No. .
Coral M. Cummings County Official

Sec. 34

● - corner this sheet