

**-CERTIFIED CORNER RECORDATION**

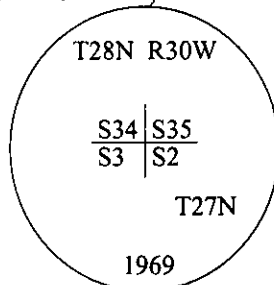
**Corner**   **Sec. Cor.**   **Secs.**   **34,35,2,3**   **T.**   **28N**   **R.**   **30W**   **P.M., MT**   **Lincoln**   **County**

- I.   1900 G.L.O. Record by Burton S. Adams:   Set a granite stone, 14x8x6 ins., 9 ins. in the ground, for cor. cor. of secs. 2,3,34 and 35, mkd. with 2 notches on E. and 4 notches on W. edges.

Established four bearing trees:

- A tamarack, 8 ins. diam., bears N70°E, 34 lks. dist., mkd. "T28N R30W S35 BT".
- A tamarack, 10 ins. diam., bears S10°E, 89 lks. dist., mkd. "T27N R30W S2 BT".
- A fir, 12 ins. diam., bears S14°W, 3 lks. dist., mkd. "T27N R30W S3 BT".
- A pine, 5 ins. diam., bears N54°15'W, 28 lks. dist., mkd. "T28N R30W S34 BT".

1969 B.L.M. Remonumentation Record by Roy G. Leedy:   The cor. of secs. 2,3,34 & 35, on the S. bdy of the Tp., monumented with a granite stone, 14x8x6 ins., firmly set, mkd. with 2 notches on the E. and 4 notches on the W. edges, and witnessed by the remains of the original bearing trees.   At the corner point, set an iron post, 30 ins. long, 2 1/2 ins. diam, 24 ins. in the ground with brass cap mkd. as shown.



Established one new bearing tree and bury the original stone alongside the iron post.

- II.   Found a 2 1/2 in. diam. iron pipe, firmly set, protruding 6 ins. above the ground, with a 3 1/4 in. diam. B.L.M. brass cap, mkd. as shown.

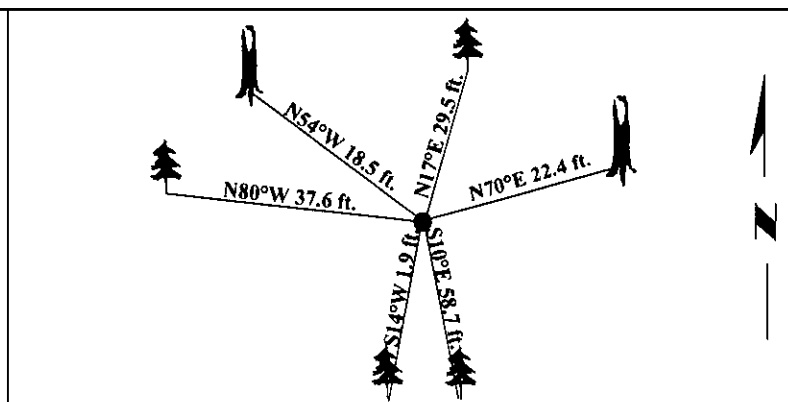
from which:

- A larch snag, 12 ins. diam., bears N70°E, 22.4 ft. dist., with visible scribe. (GLO-record)
- A larch, 16 ins. diam., bears S10°E, 58.7 ft. dist., with visible scribe. (GLO-record)
- A fir, 25 ins. diam., bears S14°W, 1.9 ft. dist., with visible scribe. (GLO-record)
- A pine snag, 9 ins. diam., bears N54°W, 18.5 ft. dist., with visible scribe. (GLO-record)
- A larch, 13 ins. diam., bears N80°W, 37.6 ft. dist., with a healed face. (BLM-record)

- III.   Established one new bearing tree:  
A hemlock, 7 ins. diam., bears N17°E, 29.5 ft. dist., mkd. "T28N R30W S35 BT".

Painted bearing trees and attached Land Survey Monument and Bearing Tree signs.

Magnetic Declination: 20° East



**SKETCH OF CORNER**

CERTIFICATION	
I. <u>Rex O. Rice</u>	certify the information shown herein is true and correct.
<u>Rex O. Rice</u>	
II. <u>Steven A. Boyer</u>	certify that this Corner Record correctly represents work performed by me or under my direction in compliance with the "Corner Recordation Act" (70-22-101, et seq., M.C.A.).
<u>Steven A. Boyer</u>	
Date: <u>6/22/98</u>	Signature of Surveyor & Seal
Reg. No.: <u>9750LS</u>	
Employer: <u>U.S. FOREST SERVICE</u>	

Office of Clerk and Recorder, County of Lincoln.   This "corner record" was filed for record on 8-19-98 and was noted on the cross-index plat and is assigned page No. 10195, in book No.                     .  
Carol M. Cummings  
County Official

