

-CERTIFIED CORNER RECORDATION

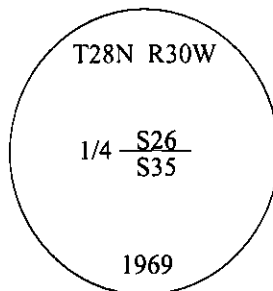
Corner **1/4** **Secs.** **26&35** **T.** **28N** **R.** **30W** **P.M., MT** **Lincoln** **County**

- I. 1900 G.L.O. Record by Burton S. Adams: Set a granite stone, 14x10x9 ins., 9 ins. in the ground for 1/4 sec. cor., mkd. "1/4" on the N. face.

Established two bearing trees:

A pine, 8 ins. diam., bears S32°E, 20 lks. dist., mkd. "1/4 S35 BT".
A pine, 10 ins. diam., bears N39°15'W, 19 lks. dist., mkd. "1/4 S26 BT".

1969 B.L.M. Remonumentation Record by Roy G. Leedy: The 1/4 sec. cor. of secs. 26 and 35, monumented with a granite stone 14x10x6 ins., firmly set, mkd. "1/4" on the N. face, and witnessed by the remains of one of the original bearing trees. At the corner point, set an iron post, 30 ins. long 2 1/2 ins. diam., 24 ins. in the ground with brass cap mkd. as shown.



Established two new bearing trees and bury the original stone alongside the iron post.

- II. Found a 2 1/2 in. diam. iron post, firmly set, protruding 6 ins. above the ground, with a 3 1/4 in. diam. B.L.M. brass cap, mkd. as shown.

from which:

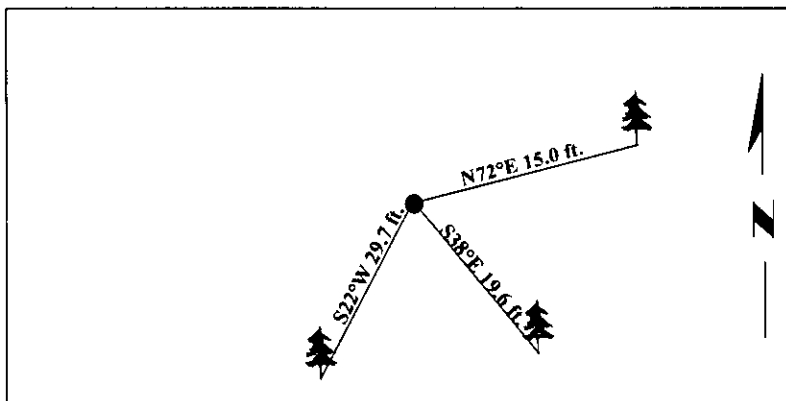
A fir, 19 ins. diam., bears N72°E, 15.0 ft. dist., with visible scribe. (BLM-rec.-22 lks.-14.5 ft.)
A pine (dying), 13 ins. diam., bears S22°W, 29.7 ft. dist., with visible scribe. (BLM-record)

- III. Established one new bearing tree:

A fir, 20 ins. diam., bears S38°E, 19.6 ft. dist., mkd. "1/4 S35 BT".

Painted bearing trees and attached Land Survey Monument and Bearing Tree signs.

Magnetic Declination: 20° East



SKETCH OF CORNER

CERTIFICATION

- I. Mark Federman
certify the information shown herein is true and correct.

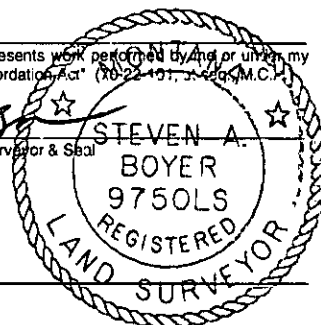
I, Steven A. Boyer
certify that this Corner Record correctly represents work performed by and/or under my direction in compliance with the "Corner Recordation Act" (10-22-1977, S. 220, M.C.A.)

Steven A. Boyer
Signature of Surveyor & Seal

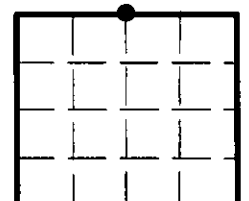
Date: 6/18/98

Reg. No.: 9750LS

Employer: U.S. FOREST SERVICE



Sec. 35



• - corner this sheet

Office of Clerk and Recorder, County of Lincoln. This "corner record" was filed for record on 8-19-98 and was noted on the cross-index plat and is assigned page No. 10168 in book No. _____.

Coral M. Cumming By DB
County Official

No.

Cross Index

V-19

T.

28N

R.

30W

P.M., MT