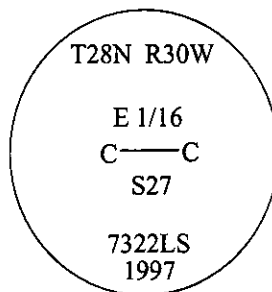


# CERTIFIED CORNER RECORDATION

Corner CE 1/16 Sec. 27 T. 28N R. 30W P.M., MT Lincoln County

- I. No previous history.
- II. No evidence found.
- III. Set by survey, a 30 ins. long x 3/4 in. diam. driveable aluminum rod, 29 ins. in the ground, with a 3 1/4 in. diam. aluminum cap mkd. as shown.

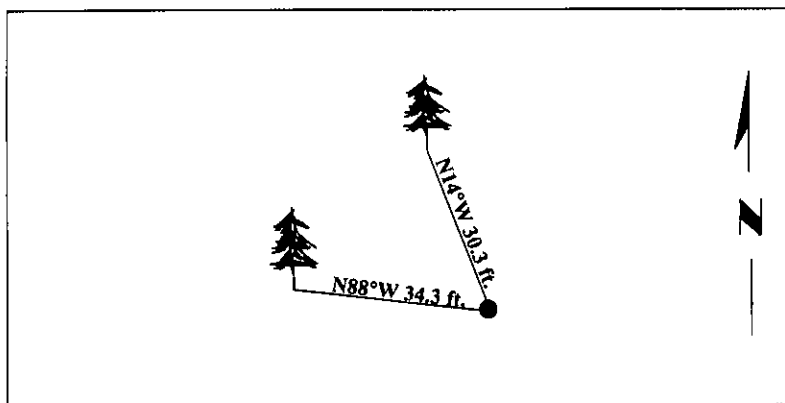


Established two bearing trees:

- A fir, 16 ins. diam., bears N14°W, 30.3 ft. dist., mkd. "CE 1/16 S27 BT".
- A fir, 15 ins. diam., bears N88°W, 34.3 ft. dist., mkd. "CE 1/16 S27 BT".

Painted bearing trees and attached Land Survey Monument and Bearing Tree signs.

Magnetic Declination: 20° East.



SKETCH OF CORNER

CERTIFICATION

I, Thomas Hommel  
certify the information shown herein is true and correct.

I, Alvah F. Hughes  
certify that this Corner Record correctly represents work performed by me or under my direction in compliance with the "Corner Recordation Act" (70-22-101, et seq., M.C.A.)

Signature of Surveyor & Seal: Alvah F. Hughes  
7322LS  
REGISTERED  
MONTANA  
SURVEYOR  
LAND

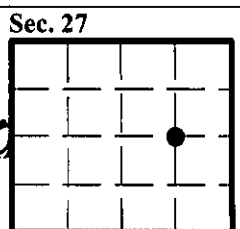
Date: 10/06/97

Reg. No.: 7322LS

Employer: U.S. FOREST SERVICE

Office of Clerk and Recorder, County of Lincoln. This "corner record" was filed for record on 12-26-97 was noted on the cross-index plat and is assigned page No. 10010 in book No. \_\_\_\_\_

Coral M. Cummins  
County Official



● - corner this sheet

Cross Index No. T-16 T. 28N R. 30W P.M., MT