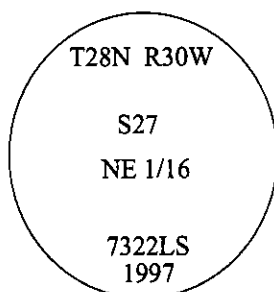


CERTIFIED CORNER RECORDATION

Corner NE 1/16 Sec. 27 T. 28N R. 30W P.M., MT Lincoln County

- I. 1973 Certified Corner Recordation by Jack W. Ninneman, 534 ES: Set by survey, a steel pin, for NE 1/16 S27..
- II. Found a 3/4 in. diam. rebar, 1 in. below the ground level, in a cultivated field. No bearing trees found.
- III. Set by survey, a 30 ins. long x 3/4 in. diam. driveable aluminum rod, 12 ins. below the surface of a cultivated field, with a 3 1/4 in. diam. aluminum cap mkd. as shown.

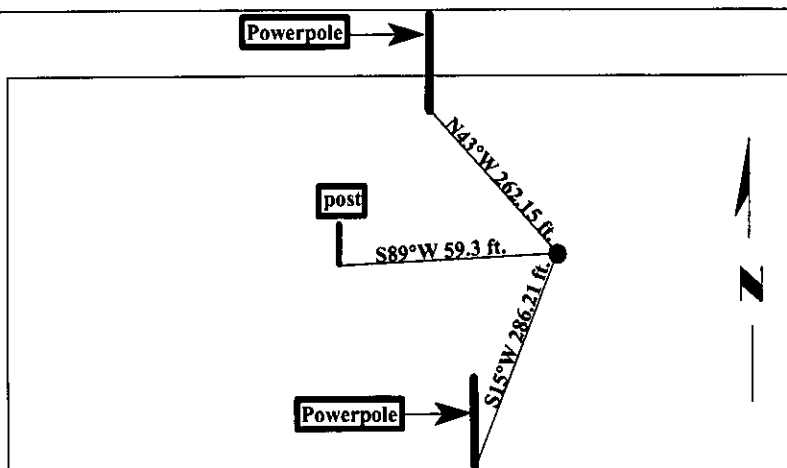


Marked 3 corner reference monuments:

- A powerpole, bears S15°W, 286.21 ft. dist., not tagged.
- A 6 ft. steel property boundary post, bears S89°W, 59.3 ft. dist. on line.
- A powerpole, bears N43°W, 262.15 ft. dist., not tagged.

Painted bearing trees and attached Land Survey Monument and Bearing Tree signs.

Magnetic Declination: 20° East.



SKETCH OF CORNER

CERTIFICATION

I, Thomas Hommel
certify the information shown herein is true and correct.

I, Alvah F. Hughes
certify that this Corner Record correctly represents work performed by me or under my direction in compliance with the "Corner Recordation Act" (70-22-101, et seq., M.C.A.)

Signature of Surveyor & Seal: Alvah F. Hughes

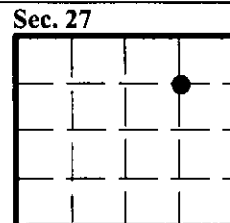
Date: 10/06/97

Reg. No.: 7322LS

Employer: U.S. FOREST SERVICE

Office of Clerk and Recorder, County of Lincoln This "corner record" was filed for record on 12-26-97 was noted on the cross-index plat and is assigned page No. 10008 in book No. _____

Carol M. Cummings By DLB
County Official



● - corner this sheet