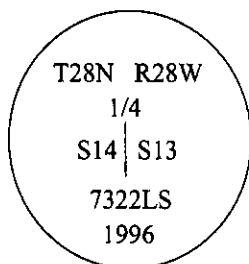


CERTIFIED CORNER RECORDATION

Corner 1/4 Sec. 13, 14 T. 28N R. 28W P.M., MT Lincoln County

- I. 1902 G.L.O. original record by Burton Adams and William Weeks: Set a limestone, 20 x 10 x 5 ins., 15 ins. in the ground, for 1/4 sec. cor., marked "1/4" on W. face, from which:
A fir, 18 ins. diam., bears N69°30'E, 24 lks. dist., scribed "1/4 S13 BT".
A pine, 16 ins. diam., bears S62°15'W, 95 lks dist., scribed "1/4 S14 BT".
- II. Found a stone, 8 x 3 ins., protruding 4 ins. above the ground, mkd. "1/4" on West face, from which,
A fir snag, 26 ins. diam., bears N70°E, 15.8 ft. (24 lks.) dist., with visible scribe.
A down tree, 12 ins. diam., bears S62°W, 62.7 ft. (95 lks) dist., with visible scribe.
- III. At the corner point, set a 2 1/2 in. diam., 30 in. long alum. pipe, with a 3 1/4 in.diam. alum. cap, 7 ins. above ground, mkd as shown:



Buried original corner stone alongside monument. Raised a 3 ft. diam. rock collar.

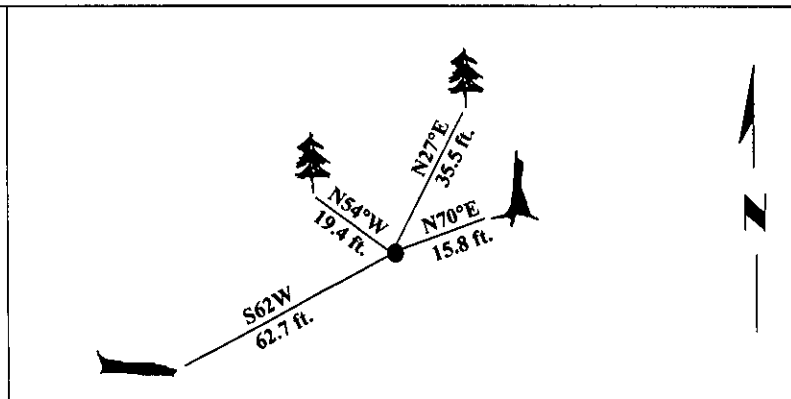
Established 2 new bearing trees:

- A fir, 12 ins. diam., bears N27°E, 35.5 ft. dist., scribed "1/4 S13 BT".
- A spruce, 22 ins. diam., bears N54°W, 19.4 ft. dist., scribed "1/4 S14 BT".

Set a 6 ft. galvanized steel guard post, East, 3.0 ft. dist., with Land Survey Monument decal.

Painted bearing trees and attached Land Survey Monument and Bearing Tree signs.

Magnetic Declination: 20° East.



SKETCH OF CORNER

CERTIFICATION

I, Mark Federman
certify the information shown herein is true and correct.
Mark Federman
Signature Ground Party Chief

I, Alvah F. Hughes
certify that this Corner Record correctly represents work performed by me or under my direction in compliance with the "Corner Recordation Act" (70-22-101, et seq., M.C.A.)
Alvah F. Hughes
Signature of Surveyor & Seal

Date: 12/31/96

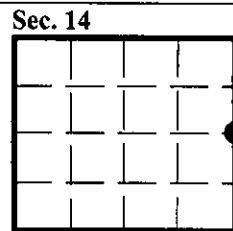
Reg. No.: 7322LS

Employer: U.S. FOREST SERVICE

HUGHES 7322LS REGISTERED SURVEYOR

Office of Clerk and Recorder, County of LINCOLN. This "corner record" was filed for record on FEB 3, 1997 and was noted on the cross-index plat and is assigned page No. 9163, in book No. _____.

CORAL M. CUMMINGS
County Official



● - corner this sheet