

INSTRUCTIONS

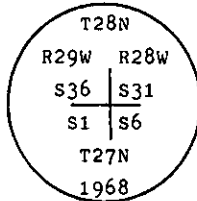
1. Original and/or subsequent record used to evaluate the corner position.
2. Description of evidence found, note discrepancies in the record, state method of establishing lost or obliterated corners.
3. Description of monument and accessories set to perpetuate the corner position.
4. Sketch of corner, show all pertinent data which can best be shown in a sketch example, corner marking, topography ties, position of accessories, etc.
5. Certification must be signed and sealed by Land Surveyor registered in the State of Montana.
6. Fill in Cross Index & Section Diagram at bottom of sheet.

CERTIFIED CORNER RECORDATION

Corner SE Sec. Cor. S36 (common to 4 Tps.) T. 28 N. R. 29 W. P.M.M. Lincoln County

I. 1902. G.L.O. original record by Burton S. Adams et al:

1968. B.L.M. remonumentation record by Woodrow E. Damm et al: "The cor. of Tps. 27 and 28 N., Rs. 28 and 29 W., as determined from the original bearing trees. At the corner point, set an iron post, 30 ins. long, 2 1/2 ins. diam., 24 ins. in the ground, with brass cap mkd.



from which

The original bearing trees:

- A fir, 12 ins. diam., bears $N57^{\circ}E$, 45 lks. dist., mkd. T28N R28W S31 BT. (Record)
 A fir, 14 ins. diam., bears $S8\frac{1}{4}^{\circ}E$, 30 lks. dist., mkd. with an overgrown blaze. (Record)
 A fir, 9 ins. diam., bears $S27\frac{1}{2}^{\circ}W$, 21 lks. dist., mkd. T27N R29W S1 BT. (Record)
 A fir, 16 ins. diam., bears $N43\frac{1}{4}^{\circ}W$, 44 lks. dist., mkd. T28N R29W S36 BT. (Record)"

II. Found, a set 2 1/2 in. dia. iron pipe, 8 ins. out of ground, with 3 1/4 in. dia., BLM brass cap marked as shown above, from which

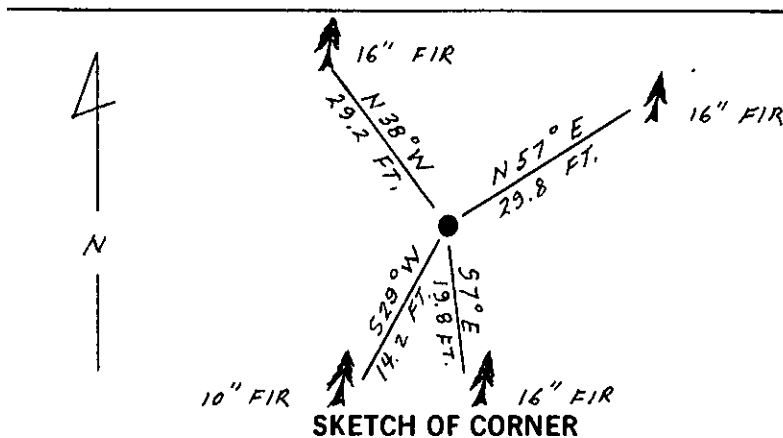
- A douglas fir, 16 ins. dia., bears $N57^{\circ}E$, 29.8 ft. (45.1 lks.) dist., scribe partially visible.
 A douglas fir, 16 ins. dia., bears $S7^{\circ}E$, 19.8 ft. (30 lks.) dist., scribe overgrown.
 A douglas fir, 10 ins. dia., bears $S29^{\circ}W$, 14.2 ft. (21.5 lks.) dist., all scribe visible.
 A douglas fir, 16 ins. dia., bears $N38^{\circ}W$ (rec: $N43\frac{1}{4}^{\circ}W$), 29.2 ft. (44.2 lks.) dist., scribe partially visible.

Found on east side of BLM monument: a set T iron with 1 in. dia. chrome cap, marked Prop Line, Sec Cor. (no record)

III. Painted red bands around the bearing trees and attached Land Survey Monument and Bearing Tree signs where needed.

Set a 6 ft. galvanized steel guard post with Land Survey Marker and Property Boundary decals, west, 3 ft.

Magnetic Declination: $20^{\circ}30'$ East



SKETCH OF CORNER

CERTIFICATION	
I.	Gary C. Crismon
certify the information shown herein is true and correct.	
Signature Ground Party Chief	
I.	Ronald A. Pearson
certify that this Corner Record correctly represents the monument as shown on the map by me or under my direction in compliance with the "Corner Recordation Act" (70-22-101, et seq., M.C.A.)	
Signature of Surveyor & Seal	
Date:	12/21/89
Reg. No.	9008 LS
Employer:	U.S. FOREST SERVICE

Office of Clerk and Recorder, County of Lincoln. This "corner record" was filed for record on Jan 9, 1990 was noted on the cross-index plat and is assigned page No. 4204, in book No. _____

Cross Index No. Z-25 T. 28 N R. 29 W PMM

Sec. 36			

• - corner this sheet