

INSTRUCTIONS

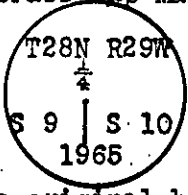
1. Original and/or substituted record used to evaluate the corner position.
2. Description of evidence found, note discrepancies in the record, state monuments lost or obliterated corners.
3. Description of monument and accessories in perpetuity, corner position.
4. Sketch of corner, show all pertinent details which can best be shown in a sketch example, corner marking, topography lies, position of accessories.
5. Certification must be signed and sealed by Land Surveyor registered in the State of Montana.
6. Fill in Cross Index & Section Diagram at bottom of sheet.

CERTIFIED CORNER RECORDATION

Corner 1/4 Cor of Secs 9 & 10 T. 28 N R. 29 W P.M.M. Lincoln County

1. 1903 GLO Record: Set a shale stone 15 x 10 x 5 ins, 10 ins in the ground, for 1/4 sec cor, marked 1/4 on W face, from which,
 A tamarack, 18 ins diam, bears N 42 1/2° E 152 lks dist, marked 1/4 S 10 BT
 No other trees within limits, raised a mound of stone 2 ft base 1 1/2 ft high, West of cor.

1965 BLM Remonumentation Record:
 At the corner point
 Set an iron post, 30 ins long, 2 1/2 ins diam, in the ground, with brass cap marked



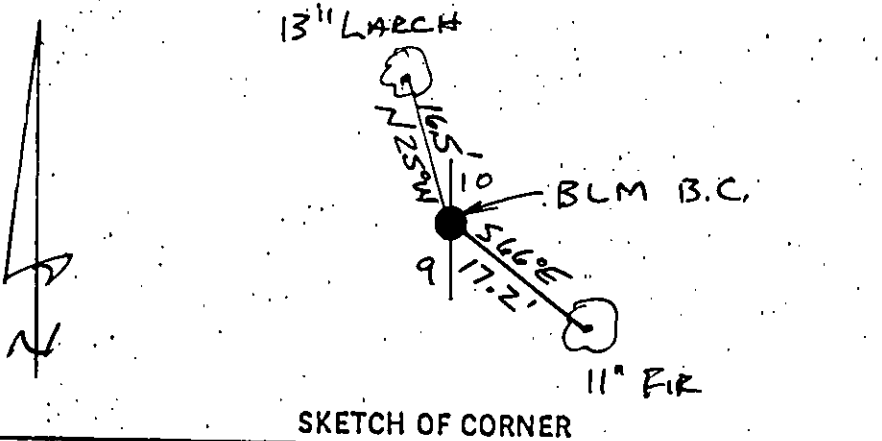
From which the original bearing tree:
 A snag, 30 ins diam, bears N 42 1/2° E 152 lks dist, with an overgrown blaze (record)

The new bearing trees
 A fir, 7 ins diam, bears S 66° E 26 lks dist, mkd 1/4 S 10 BT
 A larch, 9 ins diam, bears N 25° W 25 lks dist mkd 1/4 S 9 BT
 Bury the original stone alongside the iron post

2. Found: BLM monument with a brass cap marked as described in the BLM record, from which the following references were found;

A fir, 11 ins diam, bears S 66° E 17.2 ft dist, no visible scribing
 A larch, 13 ins diam, bears N 25° W 16.5 ft dist, no visible scribing

Since both BT's from the 1965 BLM remonumentation work were in good condition, I painted the visible blazes, as well as a 6" band with red paint. Set a steel guard post with a Survey Marker decal attached. Attached signs 54-3 and 54-9 to each BT as needed.



SKETCH OF CORNER

CERTIFICATION

I, _____
 certify the information shown herein is true and correct.

Signature Ground Party Chief
Richard G. Gocher

I, _____
 certify that this Corner Record correctly represents work performed by me or under my direction in compliance with the "Corner Recordation Act" (1972-73, 9 Mont. C.A.)

Signature of Surveyor & Seal
[Signature]

Date: 7-88 Reg. No. 7318-S
 Employer: Gocher and Assoc.

Office of Clerk and Recorder, County of Lincoln. This "corner record" was filed for record on Aug 31, 1988 was noted on the cross-index plat and is assigned page No. 3890, in book No. _____
Janet BF Sigurd by Bill Buckley
 County Official

Sec. 10

**INSTRUCTIONS TO SURVEYORS FOR COMPLETION OF
CERTIFIED CORNER RECORDATION FORMS**

I. ORIGINAL AND/OR SUBSEQUENT RECORD:

This item should describe or quote those portions of the original or subsequent record which were used in evaluating the corner position. The original record will usually be the General Land Office field notes. Subsequent record can come from several sources: Previously filed corner records, maps and plats, private and public records, etc. Some of the subsequent record, even though not in the public record, but known to have validity by the surveyor, may be quoted and appropriately noted.

The record data helps support the reestablished corner position because it clearly shows what history the surveyor based his corner position on. In some cases, however, the record may be unknown or not pertinent. A statement to that effect should appear on the corner record.

II. DESCRIPTION OF EVIDENCE FOUND OR METHOD OF LOCATING CORNER POSITION:

This item will describe the original or subsequent record evidence found. If portions of the found evidence cannot be reconciled with the record, then the disregarded record should be noted, and, if possible, an opinion as to its cause narrated.

If no physical evidence of the original or subsequent monuments and accessories can be found, then the method used to reestablish the lost or obliterated corner (single proportion, fence intersection, parol evidence, terrain calls, centerline of road, etc.) shall be indicated.

III. DESCRIPTION OF MONUMENTS AND ACCESSORIES SET TO PERPETUATE THE CORNER POSITION:

This item should list all details about the corner and its location which will help exclusively identify the corner position; including size and type of monument, how marked if not shown in sketch, and distinguishing topographic calls which help locate the corner. In many cases, instructions on how to find the corner should be included.

References or ties to other corners are optional and may be drawn on the face or back of the corner record form, or references to Certificate of Survey may be made. Separate drawings may be attached to the corner form.

If state plane coordinate values for the corner position are shown, then the control upon which they are based should be indicated.

IV. SKETCH OF CORNER:

This item will usually show how a found or set corner is marked and may also show topography or accessory monuments found or set and their relation to the corner. There is no stipulated format; the sketch could be transcribed field note entries.

V. CERTIFICATION:

The name and signature of the ground party chief is optional.

The Surveyor who performed or directed the field work which is depicted on the "Certified Corner Record" shall sign and affix his seal in the Certification.

The employer blank is optional but useful in tracking down original field note data or adjacent record if, in the future, questions arise about the corner.

VI.

The Cross Index at the bottom of the page should be completed by the Surveyor. Only the single Township Index where the corner is filed shall be completed.

The lower righthand corner is a corner location diagram and should have the pertinent section filled in at the top and a closed circle indicating the appropriate corner position in the section filled in. This is intended to be an aid in searching the "Record" once it has been filed.