

CERTIFIED CORNER RECORDATION

Corner CC Sec. 6/5 T. 28 N., R. 29 W., P.M.M. Lincoln County

Record :

1900 original GLO notes by Burton S. Adams:

Found Evidence :

Found original stone; no sign of Bearing Trees.

Perpetuation :

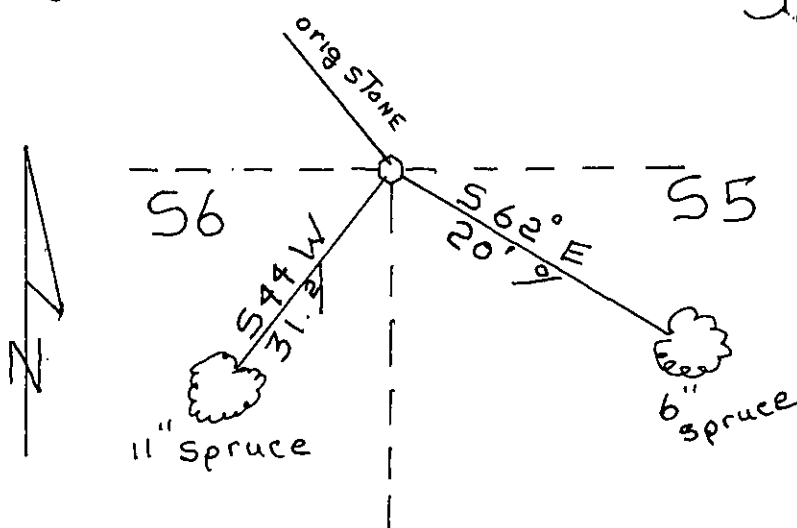
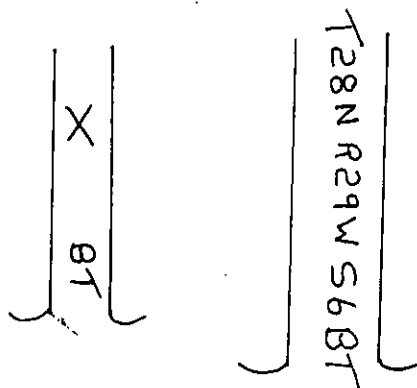
Established the following new Bearing Trees:

A Spruce, 6 inches diam. DBH, bears S 62° E, 20.00 feet, scribed "X" BT at root-crown.

A Spruce, 11 inches diam. DBH, bears S 44° W, 31.20 feet, scribed T 28 N R 29 W S 6.

Painted red bands around Bearing Trees and attached Bearing Tree and Land Survey Monument signs.

Magnetic Declination: 17° East



Sketch of Corner

**CERTIFICATION**

I, George Clark  
 certify the information shown herein is true and correct  
 Signature of Ground Party Chief  
George Clark

I, Kenneth E. Davis  
 certify that this Corner Record correctly represents work performed by  
 me or under my direction in compliance with the "Corner Recordation  
 Act" (70-22-101 et seq., M.C.A.)  
 DAVIS  
 (70-22-101 et seq., M.C.A.)  
 4975 S

Signature of Surveyor's Seal  
Kenneth E. Davis  
 Date: 2/28/2000 Reg. No. 4975 S  
 Employer: Davis Surveying, Inc.

Section

Office of Clerk and Recorder, County of Lincoln.

This "corner record" was filed for record on 2/28/2000

was noted on the cross-index plat and is assigned page No. 10420

in book No. Coral M. Cummings, pub  
County Official

