

CERTIFIED CORNER RECORDATION

Corner W 1/4 Cor. of Sec. 6 T. 28 N., R. 29 W., P.M.M. Lincoln County

Record :

1900 original GLO notes by Burton S. Adams.

"The point for 1/4 corner, a rock 18x6 feet by 5 inches above ground. A "x" for exact corner point."

1916 retracement of the West boundary of T28N R29W PMM.

Established the E 1/4 Corner for Section 1 with a limestone 16"x16"x12", 11 inches in the ground. Established two new Bearing Trees.

Found Evidence :

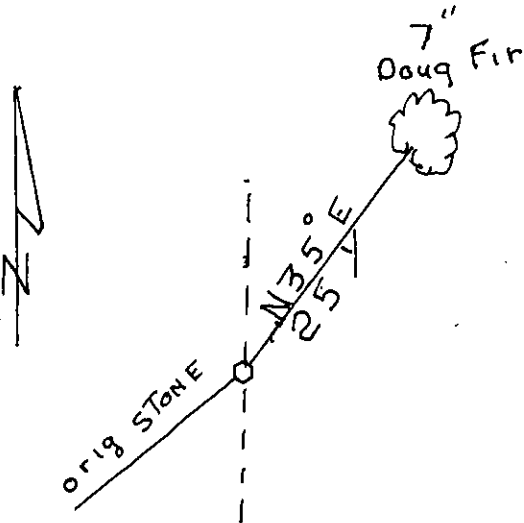
Found the stone set by Adams, the defaced tree and fir tree.

Perpetuation :

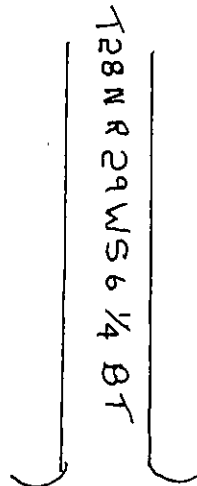
Established the following new Bearing Tree:

A Douglas Fir, 7 inches diam. DBH, bears N 35° E, 25.10 feet, scribed T28N R 29W S 6 1/4 BT.

Magnetic Declination: 17° E



Sketch of Corner



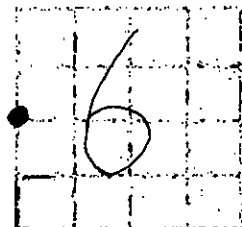
CERTIFICATION
I, George Clark
certify the information shown herein is true and correct
Signature of Ground Party Chief
I, Kenneth E. Davis
certify that this Corner Record correctly represents work performed by me or under my direction in compliance with the "Corner Recordation Act"
KENNETH E. DAVIS
Signature of Surveyor & Seal
Date: 2/28/2000 Reg. No. 4975 S
Employer: Davis Surveying, Inc.

Section

Office of Clerk and Recorder, County of Lincoln

This "corner record" was filed for record on 2/28/2000 was noted on the cross-index plat and is assigned page No. 10419

in book No. [Signature] County Official



Cross Index No. W 1/4 Cor. Sec 6 T. 28 N., R. 29 W., PMM

• THIS CORNER