

CERTIFIED CORNER RECORDATION

Corner CC Sec. 6/5 T. 28 N., R. 29 W., P.M.M. Lincoln County

Record :

1900 original GLO notes by Burton S. Adams:

Found Evidence :

Found original stone; no sign of Bearing Trees.

Perpetuation :

Established the following new Bearing Trees:

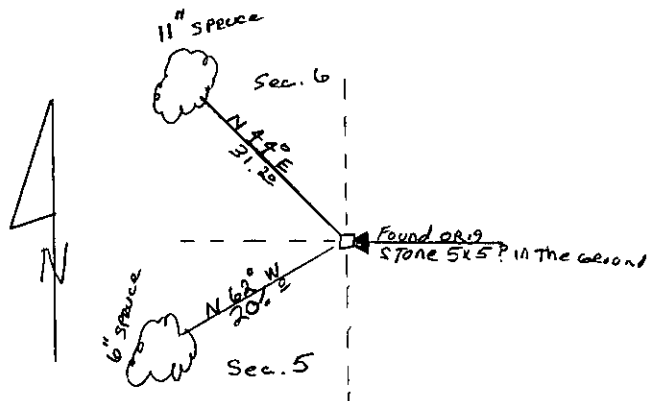
A Spruce, 6 inches diam. DBH, bears N 62° E, 20.00 feet, scribed "X" BT at root-crown.

A Spruce, 11 inches diam. DBH, bears S 44° W 31.20 feet, scribed T28N R29W S6.

Painted red bands around Bearing Trees and attached Bearing Tree and Land Survey Monument signs.

Magnetic Declination: 17° East

Set BT's for Secs 5-6 only



Sketch of Corner

CERTIFICATION

I, Rickey E. Shanes
certify the information shown herein is true and correct

Rickey E. Shanes
Signature of Ground Party Chief

I, Kenneth E. Davis
certify that this Corner Record correctly represents work performed by
Me or under my direction in compliance with the "Corner Recordation
Act"

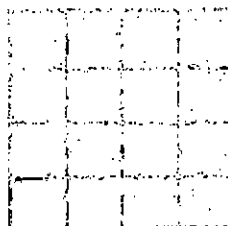
(70-28-101, et seq., M.C.A.)

[Signature]
Signature of Surveyor & Seal

Date: 8/8/98 Reg. No. 4975-S

Employer: Davis Surveying, Inc.

Section



Office of Clerk and Recorder, County of Lincoln
This "corner record" was filed for record on Oct 6, 1999 10351
was noted on the cross-index plat and is assigned page No. 10351
in book No. Coral M. Cummings By RB
County Official

Cross Index No. CC Sec. 6/5 T. 28 N., R. 29 W., PMM

• THIS CORNER