

INSTRUCTIONS

1. Original and/or subsequent record used to evaluate the corner position.
2. Description of evidence found, note discrepancies in the record, state method of establishing lost or obliterated corners.
3. Description of monument and accessories set to perpetuate the corner position.
4. Sketch of corner, show all pertinent data which can best be shown in a sketch example, corner marking, topography ties, position of accessories, etc.
5. Certification must be signed and sealed by Land Surveyor registered in the State of Montana.
6. Fill in Cross Index & Section Diagram at bottom of sheet.

CERTIFIED CORNER RECORDATION

Cor. of Secs. 20, 21, 28 & 29 T. 28 N., R. 28 W., Lincoln County

- I. 1902 G.L.O. record by B. S. Adams & W. E. Weeks: Marked a corner tree and four bearing trees.

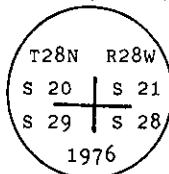
1976 B.L.M. Remonumentation by J. E. French: "The cor. of secs. 20, 21, 28 and 29, monumented with a decayed larch, 6 ins. diam., with visible blazes on two sides, and witnessed by the remains of the original bearing trees:

A dead pine, 12 ins. diam., bears N37° E, 29 lks. dist., mkd. T28N R28W S21 BT.

A dead pine, 12 ins. diam., bears S25 3/4° E, 30 lks. dist., mkd. T28N R28W S28 BT (Record: 32 lks.)

A pine stump, 8 ins. diam., bears S52° W, 11 lks. dist., with a pine, 8 ins. diam., mkd. T28N R28W S29 BT, lying alongside.

At the corner point: Set an iron post, 30 ins. long, 2 1/2 ins. diam., 24 ins. in the ground, with brass cap mkd.



from which the new bearing trees:

A larch, 12 ins. diam., bears N61 1/2° E, 19 lks. dist., mkd. T28N R28W S21 BT.

A fir, 10 ins. diam., bears S78 1/2° E, 97 lks. dist., mkd. T28N R28W S28 BT.

A larch, 6 ins. diam., bears S8° W, 68 lks. dist., mkd. T28N R28W S29 BT.

A fir, 7 ins. diam., bears N46 1/2° W, 115 lks. dist., mkd. T28N R28W S20 BT.

Place the decayed remains of the original tree monument alongside the iron post."

- II. Found an iron pipe, 2 1/2 ins. diam., 30 ins. long, with a 3 1/4 in. diam., B.L.M. brass cap mkd. as shown above, removed by logging operation.

from which found bearing trees:

A larch, 13 ins. diam., bears N62° E, 12.5 ft. (19 lks.) dist., visible scribe (B.L.M. record).

A fir stump, 10 ins. diam., bears S77° E, 64.0 ft. (97 lks.) dist., bottom of face visible (B.L.M.).

A fir, 9 ins. diam., bears N47° W, 75.9 ft. (115 lks.) dist., healed face (B.L.M. record).

The remains of original bearing trees found in a slash pile, B.L.M. tree for Sec. 29 falls in logging skid road.

- III. Reset B.L.M. iron pipe by distance - distance intersection from found B.L.M. bearing trees.

Established one new bearing tree:

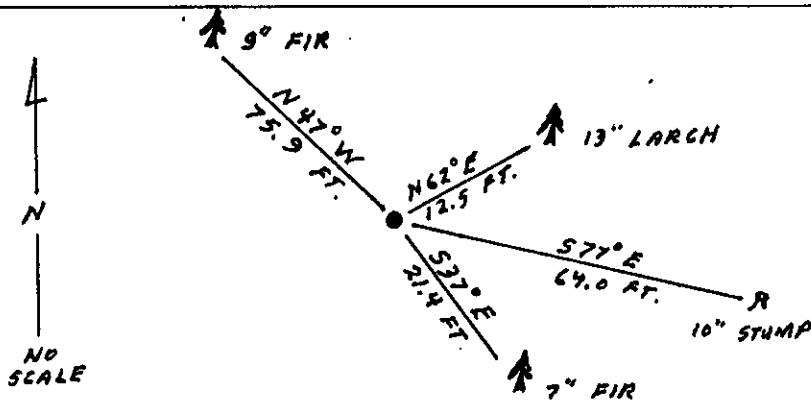
A fir, 7 ins. diam., bears S37° E, 21.4 ft. dist., mkd. X BT.

No bearing trees available in sec. 29, falls in clearcut.

Painted red bands around the bearing trees and attached Land Survey Monument and Bearing Tree signs.

Set a 6 ft. galvanized steel guard post with Land Survey Marker & Property Boundary decals. West, 3 ft.

Magnetic Declination: 20° East



SKETCH OF CORNER

CERTIFICATION

I, Rex O. Rice

certify the information shown herein is true and correct.

Signature Ground Party Chief

1, Ronald A. Pearson

certify that this Corner Record correctly represents the work performed by me or under my direction in compliance with the "Corner Recordation Act" (70-22-101, et seq., M.C.A.)

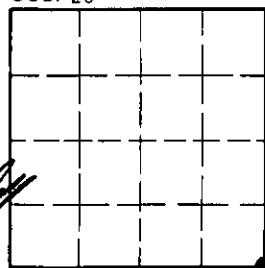
Signature of Surveyor & Seal

Date: 7/14/92 Reg. No. 9008 LS

Employer: U.S. FOREST SERVICE

Office of Clerk and Recorder, County of Lincoln. This "corner record" was filed for record on July 30, 1992 was noted on the cross-index plat and is assigned page No. 5079, in book No. Coral M. Cummings by Bill B. B. County Official

Sec. 20



• - corner this sheet

Cross Index No. R-09 T. 28 N. R. 28 W. PMM