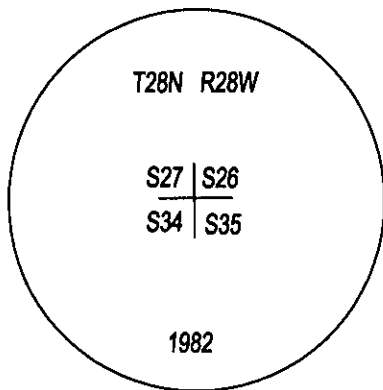
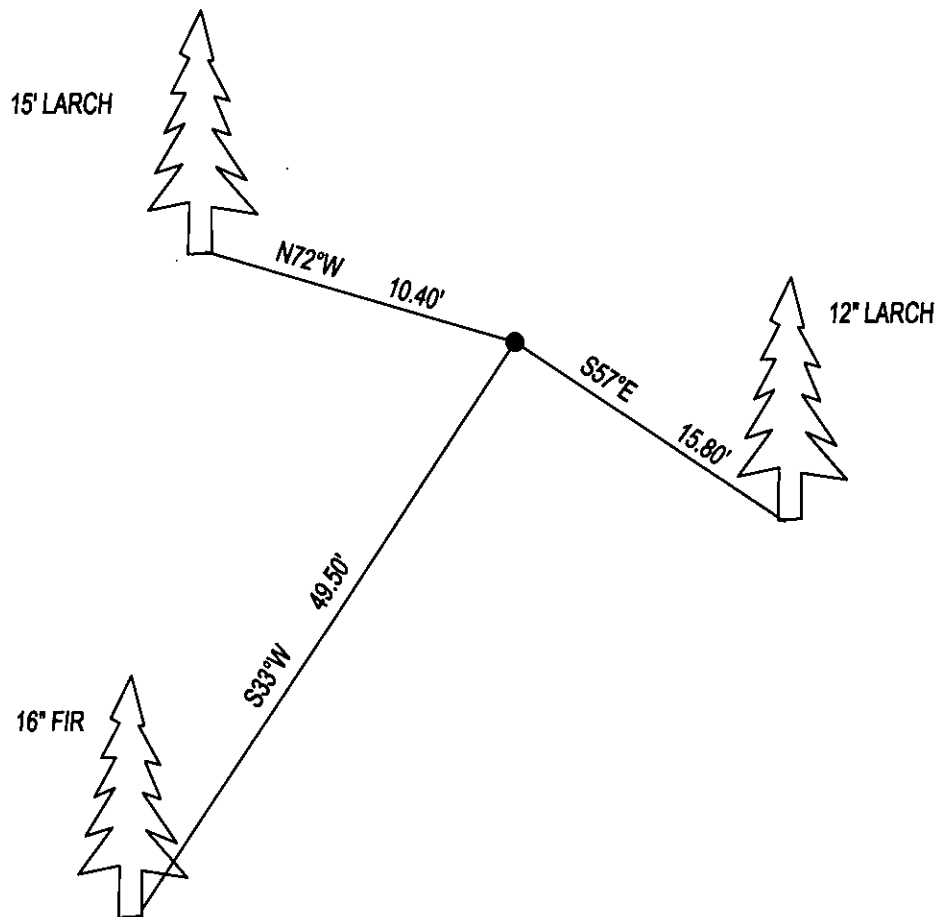


CERTIFIED CORNER RECORDATION

CORNER SW CORNER SEC. 26 T. 28N , R. 28W , P.M.M., LINCOLN COUNTY

FOUND: 3 1/4" ALUM CAP STAMPED AS SHOWN, FROM WHICH;
12" LARCH BEARS S57°E 15.80' WITH OVERGROWN SCRIBE.
16" FIR BEARS S33°W 49.50' WITH OVERGROWN SCRIBE.
15" LARCH BEARS N72°W 10.40' WITH OVERGROWN SCRIBE.

MAINTENANCE: CHOPPED OUT BRUSH FROM AROUND CORNER.
ATTACHED BEARING TREE TAG'S AND PAINTED RED BANDS ON BEARING TREES.




SKETCH OF CORNER

CERTIFICATION

I, DAN CROFT
CERTIFY THE INFORMATION SHOWN HEREIN IS TRUE AND CORRECT.

SIGNATURE GROUND PARTY CHIEF

I, MARC J. CARSTENS
CERTIFY THAT THIS CORNER RECORD CORRECTLY REPRESENTS WORK
PERFORMED BY ME OR UNDER MY DIRECTION IN COMPLIANCE WITH THE
"CORNER RECORDATION ACT" (70-22-101, ET SEQ., M.C.A.)

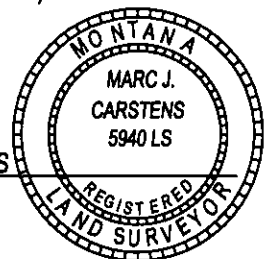

SIGNATURE OF SURVEYOR & SEAL

10-15-2014

DATE

CARSTENS SURVEYING
EMPLOYER

5940LS
REG. NO.

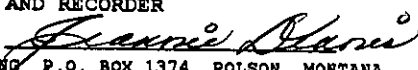


OFFICE OF CLERK AND RECORDER, COUNTY C
THIS "CORNER RECORD" WAS FILED FOR REC
WAS NOTED ON T
AND IS ASSIGNED PAGE NO. _____, IN BC

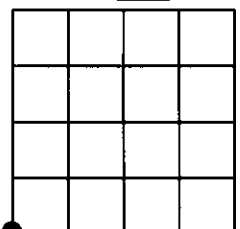
COUNTY OFFICIAL

CROSS INDEX NO. V-17 T. 28N , R. 28W , P.M.M.

ADOPTED JULY 1, 1981, MONTANA BOARD OF PROFESSIONAL ENGINEERS & LAND SURVEYORS

254147 BOOK: CCR CC&R'S PAGE: 12155 Pages: 1
STATE OF MONTANA LINCOLN COUNTY
RECORDED: 10/28/2014 10:50 KOI: CC&R'S
TAMMY D. LAUER CLERK AND RECORDER
FEE: \$0.00 BY: 
FOR: CARSTENS LAND SURVEYING P.O. BOX 1374, POLSON, MONTANA

SEC. 26



● CORNER THIS SHEET