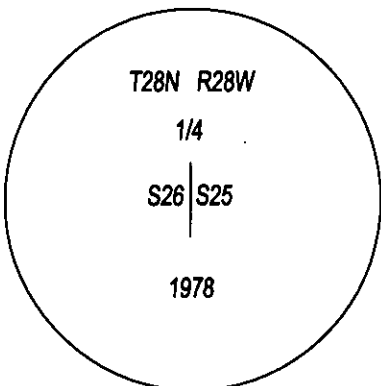
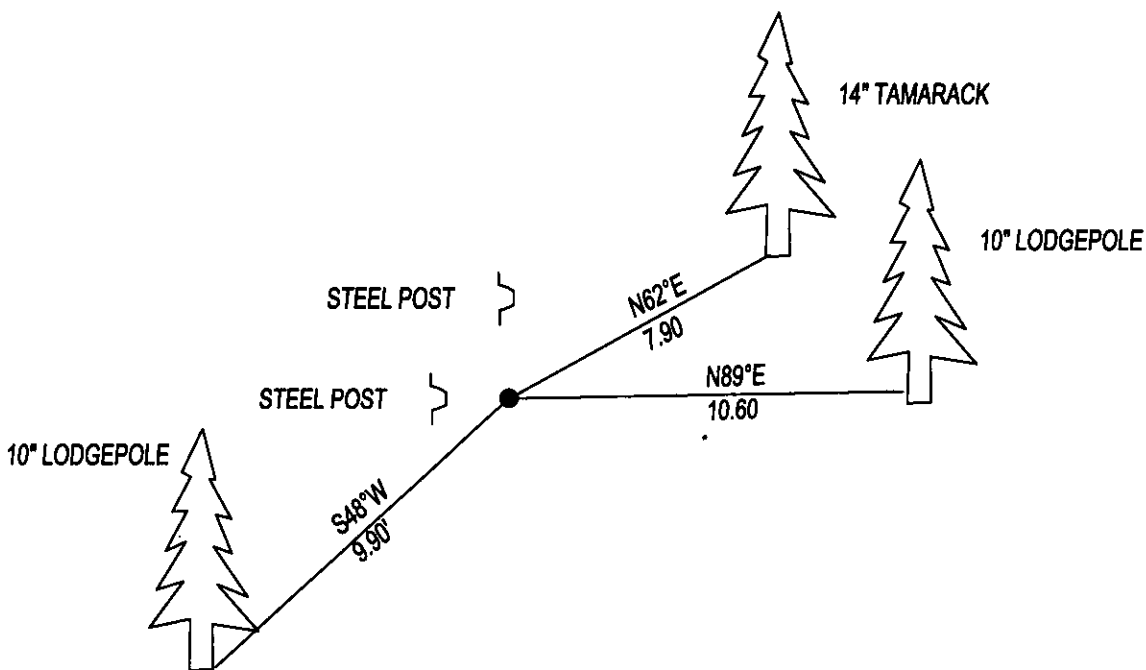


# CERTIFIED CORNER RECORDATION

CORNER E1/4 SEC. 26 T. 28N, R. 28W, P.M.M., LINCOLN COUNTY

FOUND: 3 1/4" BLM BRASS CAP STAMPED AS SHOWN, FROM WHICH;  
 10" LODGEPOLE BLOWN DOWN BEARS N89°E 10.60' SCRIBED 1/4 S 25 BT.  
 11" LODGEPOLE SNAG BEARS S49°W 9.90' SCRIBED 1/4 S26 BT.  
 14" TAMARACK BEARS N62°E 7.90' WITH HEALED OVER BLAZE AND LOCATION POSTER.

MAINTENANCE: SET A 5 FOOT STEEL POSTS 1 FOOT WEST AND 1 FOOT NORTH OF CORNER.  
 ATTACHED BEARING TREE TAG'S AND PAINTED RED BANDS ON BEARING TREES.



SKETCH OF CORNER

### CERTIFICATION

I, DAN CROFT  
 CERTIFY THE INFORMATION SHOWN HEREIN IS TRUE AND CORRECT.

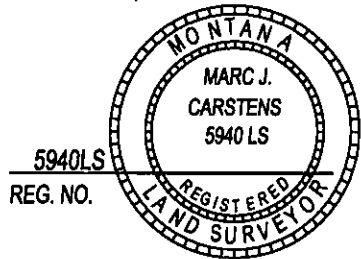
SIGNATURE GROUND PARTY CHIEF

I, MARC J. CARSTENS  
 CERTIFY THAT THIS CORNER RECORD CORRECTLY REPRESENTS WORK  
 PERFORMED BY ME OR UNDER MY DIRECTION IN COMPLIANCE WITH THE  
 "CORNER RECORDATION ACT" (70-22-101, ET SEQ., M.C.A.)

*[Signature]*  
 SIGNATURE OF SURVEYOR & SEAL

10-15-2014  
 DATE

CARSTENS SURVEYING  
 EMPLOYER



5940LS  
 REG. NO.

OFFICE OF CLERK AND RECORDER, COUNTY OF  
 THIS "CORNER RECORD" WAS FILED FOR RECOF  
 WAS NOTED ON THE  
 AND IS ASSIGNED PAGE NO. \_\_\_\_\_, IN BOO.

COUNTY OFFICIAL

CROSS INDEX NO. T-21 T. 28N, R. 28W, P.M.M.

ADOPTED JULY 1, 1981, MONTANA BOARD OF PROFESSIONAL ENGINEERS & LAND SURVEYORS

254143 BOOK: CCR CC&R'S PAGE: 12151 Pages: 1  
 STATE OF MONTANA LINCOLN COUNTY  
 RECORDED: 10/28/2014 10:46 KOI: CC&R'S  
 TAMMY D. LAUER CLERK AND RECORDER  
 FEE: \$0.00 BY: *[Signature]*  
 FOR: CARSTENS LAND SURVEYING P.O. BOX 1374, POLSON, MONTANA

SEC. 26


● CORNER THIS SHEET