

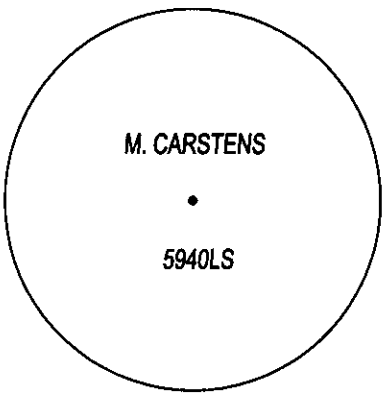
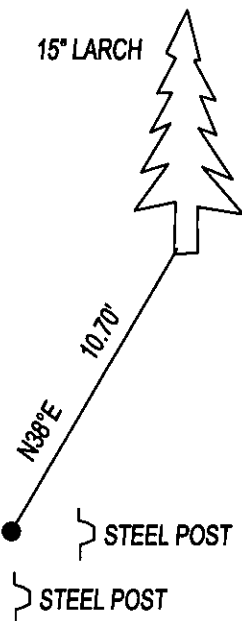
CERTIFIED CORNER RECORDATION

CORNER CE1/16 SEC. 26 T. 28N, R. 28W, P.M.M., LINCOLN COUNTY

RECORD: NONE.

FOUND: NOTHING.

PERPETUATION: SET A 5/8"x24" REBAR WITH YELLOW PLASTIC CAP STAMPED AS SHOWN, FROM WHICH;
A BLAZED 15" LARCH BEARS N38°E 10.70'.
ATTACHED BEARING TREE TAG AND PAINTED RED BAND ON BEARING TREE.
SET A 5 FOOT STEEL POSTS 2 FEET EAST AND 1 FOOT SOUTH OF CORNER.



SKETCH OF CORNER

CERTIFICATION

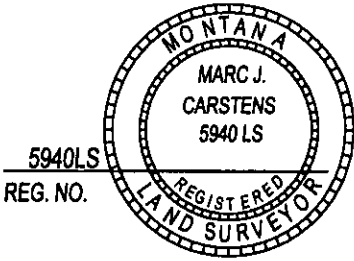
I, DAN CROFT
CERTIFY THE INFORMATION SHOWN HEREIN IS TRUE AND CORRECT.

SIGNATURE GROUND PARTY CHIEF

I, MARC J. CARSTENS
CERTIFY THAT THIS CORNER RECORD CORRECTLY REPRESENTS WORK
PERFORMED BY ME OR UNDER MY DIRECTION IN COMPLIANCE WITH THE
"CORNER RECORDATION ACT" (70-22-101, ET SEQ., M.C.A.)

SIGNATURE OF SURVEYOR & SEAL

10-15-2014
DATE
CARSTENS SURVEYING
EMPLOYER



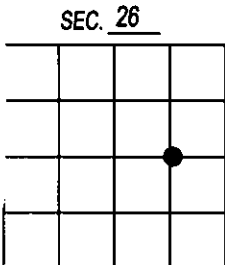
OFFICE OF CLERK AND RECORDER, COUNTY OF
THIS "CORNER RECORD" WAS FILED FOR RECOI
AND IS ASSIGNED PAGE NO. _____, IN BOC

COUNTY OFFICIAL

CROSS INDEX NO. T-20 T. 28N, R. 28W, P.M.M.

ADOPTED JULY 1, 1981, MONTANA BOARD OF PROFESSIONAL ENGINEERS & LAND SURVEYORS

254142 BOOK: CCR CC&R'S PAGE: 12150 Pages: 1
STATE OF MONTANA LINCOLN COUNTY
RECORDED: 10/28/2014 10:45 KOI: CC&R'S
TAMMY D. LAUER CLERK AND RECORDER
FEE: \$0.00 BY:
FOR: CARSTENS LAND SURVEYING P.O. BOX 1374, POLSON, MONTANA



● CORNER THIS SHEET