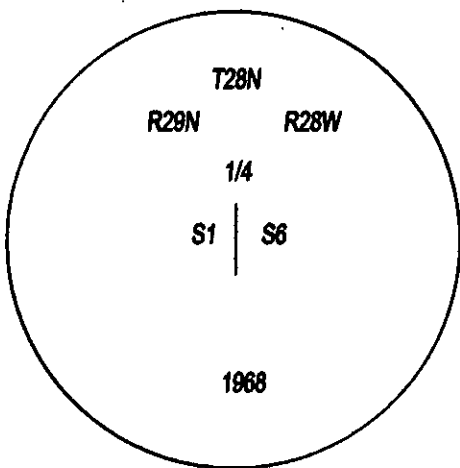
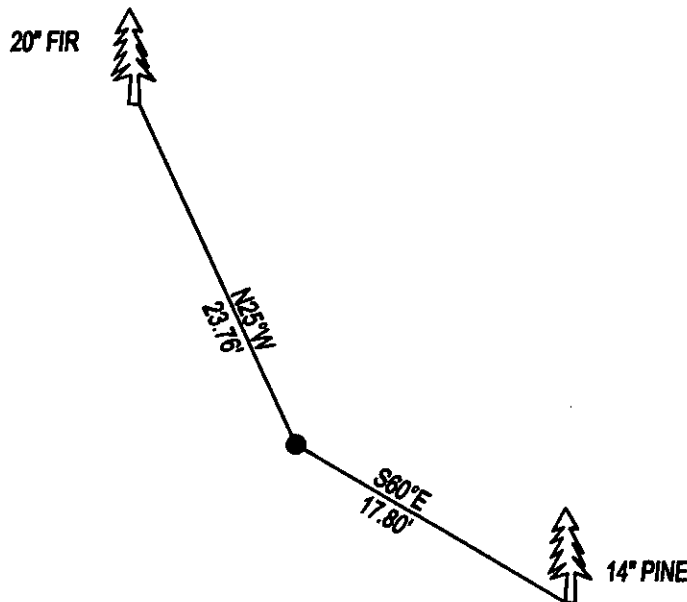


CERTIFIED CORNER RECORDATION

CORNER W1/4 SECTION 6 T. 28N R. 28W P.M.M., LINCOLN COUNTY

RECORD 1968 BLM: SET 3 1/4" BRASS CAP ON 2 1/2" IRON PIPE 24" INTO THE GROUND, FROM WHICH;
16" FIR BEARS N25°W 36 LKS WITH OVERGROWN SCRIBE.
NEW 9" FIR BEARS S80°E 27 LKS SCRIBED 1/4 S6 BT.

FOUND: 3 1/4" BRASS CAP STAMPED AS SHOWN, FROM WHICH;
14" PINE BEARS S80°E 17.80' SCRIBE OVERGROWN.
UPROOTED 20" FIR BEARS N25°W 23.76' SCRIBE OVERGROWN.



SKETCH OF CORNER

CERTIFICATION


I, DAN CROFT

CERTIFY THE INFORMATION SHOWN HEREIN IS TRUE AND CORRECT.

SIGNATURE GROUND PARTY CHIEF

I, MARC J. CARSTENS

CERTIFY THAT THIS CORNER RECORD CORRECTLY REPRESENTS WORK
PERFORMED BY ME OR UNDER MY DIRECTION IN COMPLIANCE WITH THE
"CORNER RECORDATION ACT" (70-22-101, M.C.A.)

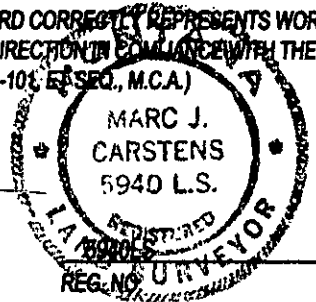

SIGNATURE OF SURVEYOR & SEAL

06-14-12

DATE

CARSTENS SURVEYING

EMPLOYER



OFFICE OF CLERK AND RECORDER, COUNTY OF
THIS "CORNER RECORD" WAS FILED FOR REC
AND IS ASSIGNED PAGE NO. _____ IN BO

239372 BOOK: CCR CC&R'S PAGE: 11976 Pages: 1

STATE OF MONTANA LINCOLN COUNTY

RECORDED: 06/25/2012 10:15 KOI: CC&R'S

TAMMY D. LAUER CLERK AND RECORDER

FEE: \$0.00

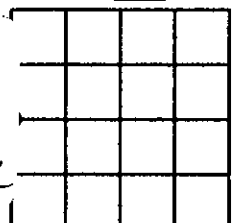
FOR: CARSTENS SURVEYING

COUNTY OFFICIAL

CROSS INDEX NO. C-1 T. 28N R. 28W P.M.M.

ADOPTED JULY 1, 1981, MONTANA BOARD OF PROFESSIONAL ENGINEERS & LAND SURVEYORS

SEC. 6



● CORNER THIS SHEET