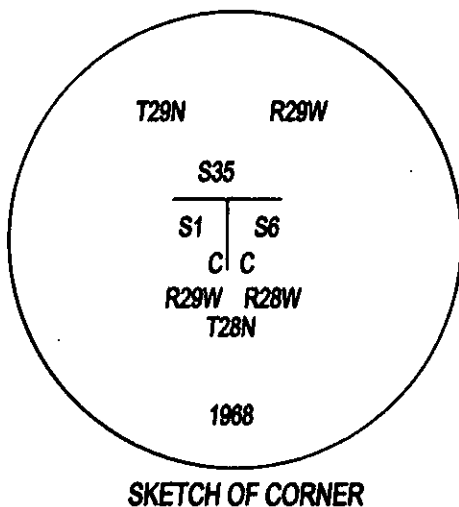
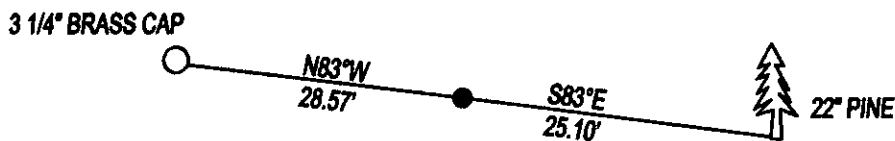


# CERTIFIED CORNER RECORDATION

CORNER NW SECTION 6 T. 28N R. 28W P.M.M., LINCOLN COUNTY

RECORD 1968 BLM: SET 3 1/4" BRASS CAP ON 2 1/2" IRON PIPE 24" INTO THE GROUND, FROM WHICH;  
18" SNAG BEARS S19 3/4°E 50 LKS DIST SCRIBED S8  
18" LARCH BEARS S59 3/4°W 114 LKS DIST. WITH OVERGROWN BLAZE.  
NEW 13" PINE BEARS S83°E 38 LKS DIST. SCRIBED T28N R28W S8 CC BT.

FOUND: 3 1/4" BRASS CAP STAMPED AS SHOWN, FROM WHICH;  
22" PINE BEARS S83°E 25.10' WITH OVERGROWN SCRIBE.  
A 3 1/4" BRASS CAP FOR THE 1/4 CORNER OF SECTION 35 T29N R29W BEARS N83°W 28.57'



SKETCH OF CORNER

## CERTIFICATION

I, DAN CROFT  
CERTIFY THE INFORMATION SHOWN HEREIN IS TRUE AND CORRECT.

SIGNATURE GROUND PARTY CHIEF

I, MARC J. CARSTENS

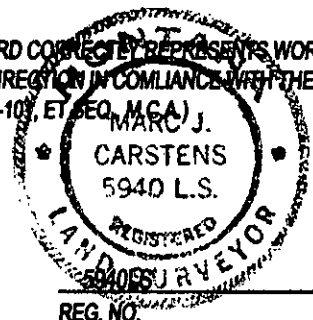
CERTIFY THAT THIS CORNER RECORD CORRECTLY REPRESENTS WORK PERFORMED BY ME OR UNDER MY DIRECTION IN COMPLIANCE WITH THE "CORNER RECORDATION ACT" (70-22-103, ET SEQ. MCA) J.

MARC J. CARSTENS  
SIGNATURE OF SURVEYOR & SEAL

06-14-12

DATE

CARSTENS SURVEYING  
EMPLOYER



REG. NO.

OFFICE OF CLERK AND RECORDER, COUNTY OF LINCOLN

THIS "CORNER RECORD" WAS FILED FOR

239371 BOOK: CCR CC&R'S PAGE: 11975 Pages: 1

AND IS ASSIGNED PAGE NO. WAS NOTED

STATE OF MONTANA LINCOLN COUNTY

COUNTY OFFICIAL

RECORDED: 06/25/2012 10:12 KOI: CC&R'S

CROSS INDEX NO. A-1

TAMMY D. LAUER CLERK AND RECORDER

ADOPTED JULY 1, 1981, MONTANA BOARD OF PROFESSIONAL ENGINEERS & LAND SURVEYORS

FEE: \$0.00

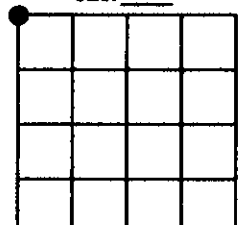
BY: Jeanie Leroy

FOR: CARSTENS SURVEYING

T. 28N R. 28W P.M.M.

FOR: CARSTENS SURVEYING

SEC. 6



● CORNER THIS SHEET