

**CERTIFIED CORNER RECORDATION**

Corner SE Cor. S28 T. 28 N. R. 28 W. P.M.M. LINCOLN County

I. Record: 1902 GLO survey by Adams and Weeks : Set a limestone 16x10x6 ins., 10 ins. in the ground, mkd. with 1 notch on the S. and 3 notches on E. edges, scribe 4 bearing trees.

1969 BLM Remon: Set a iron post with brass cap from from original stone monument from which:

- A fir, 18 ins. diam., bears N.8°45'E., 106 lks.(69.96 ft.) dist., mkd. with overgrown blaze.
- A pine, 34 ins. diam., bears S.27°15'E., 32 lks.(21.12 ft.) dist., mkd. BT.
- A fir, 16 ins. diam., bears S.23°30'W., 65 lks.(42.90 ft.) dist., mkd. with overgrown blaze.
- A pine, 32 ins. diam., bears N.57°30'W., 40 lks.(26.40 ft.) dist., mkd. T28N R28W S28 BT.

New Bearing trees:

- A fir, 6 ins. diam., bears S.73°30'E., 23 lks.(15.18 ft.) dist., mkd. T28N R28W S34 BT.
- A fir, 6 ins. diam., bears N.39°W., 20 lks.(13.20 ft.) dist., mkd. T28N R28W S28 BT.

II. Found: A 3 1/4 in. diam. BLM brass cap firmly set, mkd. as shown below from which:

- A fir, 23 ins. diam., bears N.11°E., 71.21 ft. dist., with overgrown face.
- A fir, 5 ins. diam., bears S.74°E., 15.20 ft. dist., with overgrown face.
- A pine, 34 ins. diam., bears S.26°E., 21.00 ft. dist., with overgrown face.
- A fir, 23 ins. diam., bears S.26°W., 42.80 ft. dist., with overgrown face.
- A pine, 30 ins. diam., bears N.54°W., 26.60 ft. dist., mkd. T28N R28W S28 BT.
- A fir, 6 ins. diam., bears N.36°W., 13.10 ft. dist., with overgrown face.

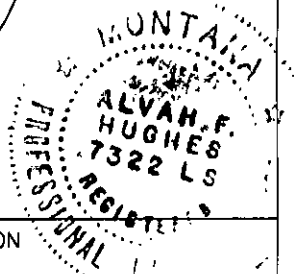
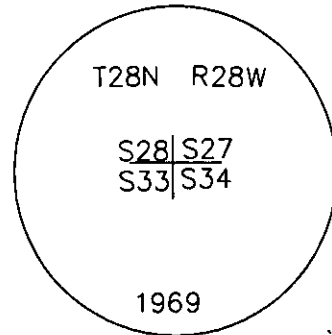
III. Perpetuation:

Painted faces and 6 in. wide red bands to all bearing trees and attached Land Survey Monument and Bearing Tree signs.

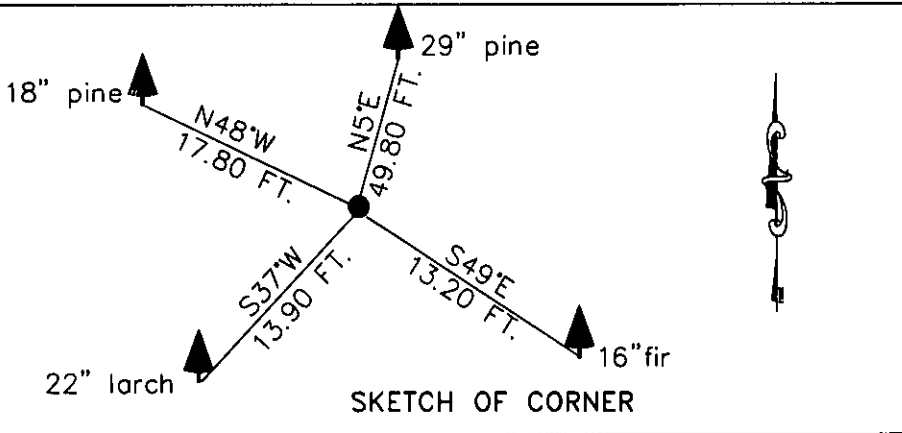
Set a steel post 1 ft. N. of found monument.

Magnetic declination: 20° East assumed

Equipment used: Hand compass and loggers tape



Kootenai Surveyors Inc., 314 California Av., Libby, MT. 59923 (406) 293-4354



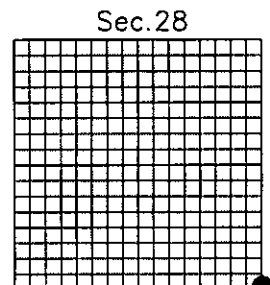
CERTIFICATION  
 I, Pete Landis  
 certify the information shown herein is true and correct.  
 Signature: Pete Landis  
 Ground Party Chief  
 I, Alvan F. Hughes  
 certify that this Corner Record correctly represents work performed by me or under my direction in compliance with the "Corner Recordation Act" (70-22-101, et seq., M.C.A.)  
 Signature: Alvan F. Hughes  
 Signature of Surveyor & Seal  
 Date: 04/21/2004 Reg. No. 7322-LS  
 Employer: Kootenai Surveyors Inc.

Office of Clerk and Recorder, County of Lincoln This "corner

record" was filed for rer  
 was noted on the cross  
 book No. \_\_\_\_\_

Cross Index No. V13 T. 28N. R. 28W. P.M., MT

Adopted July 1, 1981, Montana Board of Professional Engineers & Land Surveyors



• corner this sheet