

CERTIFIED CORNER RECORDATION

Corner NE Cor. S28 T. 28 N. R. 28 W. P.M.M. LINCOLN County

I. Record: 1902 GLO survey by Adams and Weeks : Set a sandstone 18x12x12 ins., 12 ins. in the ground, mkd. with 2 notches on the S. and 3 notches on E. edges, from which:

A fir, 16 ins. diam., bears N.76°45'E., 54 lks.(35.64 ft.) dist., mkd. T28N R28W S22 BT.

A fir, 8 ins. diam., bears S.49°45'E., 20 lks.(13.20 ft.) dist.,mkd. T28N R28W S27 BT.

A tamarack, 24 ins. diam., bears S.37°W., 21 lks.(13.86 ft.) dist., mkd. T28N R28W S28 BT.

A pine, 16 ins. diam., bears N.48°30'W., 27 lks.(17.82 ft.) dist., mkd. T28N R28W S21 BT.

II. Found: a Sandstone 12x12x10 ins. 6 ins. in the ground, with 2 notches on the S. and 3 notches on E. edges, from which:

A fir, 16 ins. diam., bears S.49°E., 13.20 ft. dist., with overgrown face.

A larch, 22 ins. diam., bears S.37°W., 13.90 ft. dist., with visible scribing.

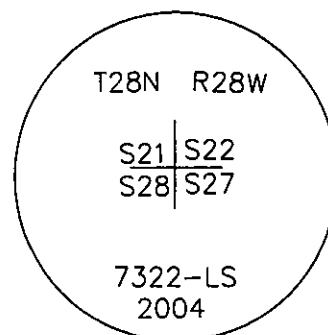
A pine, 18 ins. diam., bears N.48°W., 17.80 ft. dist., with overgrown face.

III. Perpetuation: We set a Alum. pipe, 2 1/2 ins. diam. 30 ins. long 24 ins. in the ground, with a 3 1/4 ins. diam. Alum. cap marked as shown below from which:

A pine, 29 ins. diam., bears N.5°E., 49.80 ft. dist., scribed T28N R28W S22 BT.

Painted faces and 6 in. wide red bands to all bearing trees and attached Land Survey Monument and Bearing Tree signs.

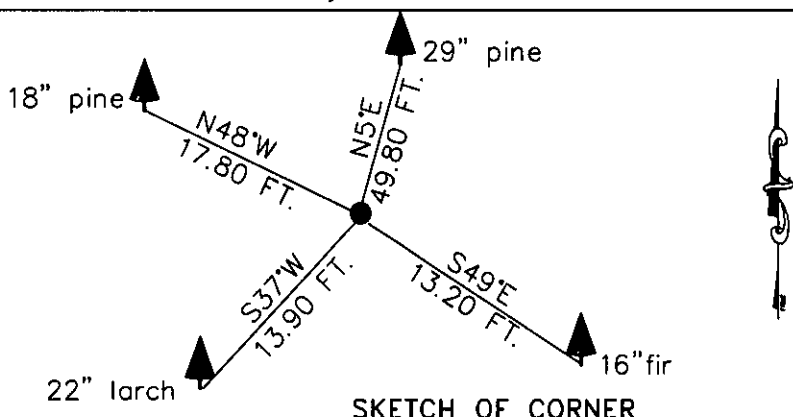
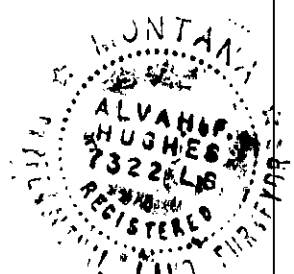
Set a steel post 2 ft. S. of set monument.



Magnetic declination: 20° East assumed

Equipment used: Hand compass and loggers tape

Kootenai Surveyors Inc., 314 California Av., Libby, MT. 59923 (406) 293-4354



SKETCH OF CORNER

CERTIFICATION

I, Pete Vandis
certify the information shown herein is true and correct.

Pete Vandis
Signature Ground Party Chief

I, Alvah F. Hughes
certify that this Corner Record correctly represents work performed by me or under my direction in compliance with the "Corner Recordation Act" (70-22-101, et seq., M.C.A.)

Alvah F. Hughes 7322LS
Signature of Surveyor & Seal

Date: 04/21/2004 Reg. No. 7322-LS

Employer: Kootenai Surveyors Inc.

Office of Clerk and Recorder, County of Lincoln This "corner

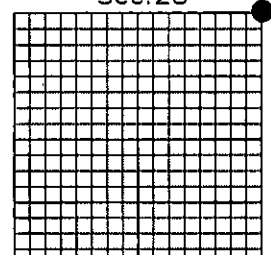
record" was filed for rec:
was noted on the cross-
book No. _____

181345 BOOK: CCR CC&R'S PAGE: 10741 Pages: 1
STATE OF MONTANA LINCOLN COUNTY
RECORDED: 12/17/2004 9:26 KOI: CC&R'S
CORAL M. CUMMINGS CLERK AND RECORDER
FEE: \$0.00 BY: Joanni Rennie
TO: FILED ,

Cross Index No. R13 T. 28N. R. 28W. P.M., MT

Adopted July 1, 1981, Montana Board of Professional Engineers & Land Surveyors

Sec.28



• corner this sheet