

CERTIFIED CORNER RECORDATION

Corner E 1/4 Sec. 22 T. 28 N., R. 28 W., P.M.M. Lincoln County

Record :

Original GLO notes by Burton S. Adams.

"Set a limestone, 12 x10 x 6 ins., 8 ins. in the ground, for 1/4 sec. cor., marked 1/4 on W. face; from which

A fir, 10 ins. in diam., bears S. 53°15' E., 34 lks. dist., marked 1/4 S 23 BT.

A fir, 12 ins. in diam., bears S. 59° W., 48 lks. dist., marked 1/4 S 22 BT."

Found Evidence :

Found original stone marked 1/4. Found two (2) Bearing Trees.

A douglas fir, 14 ins. in diam., bears S. 53° E., 22 ft. dist., in good condition.

A douglas fir, blown down and rotten.

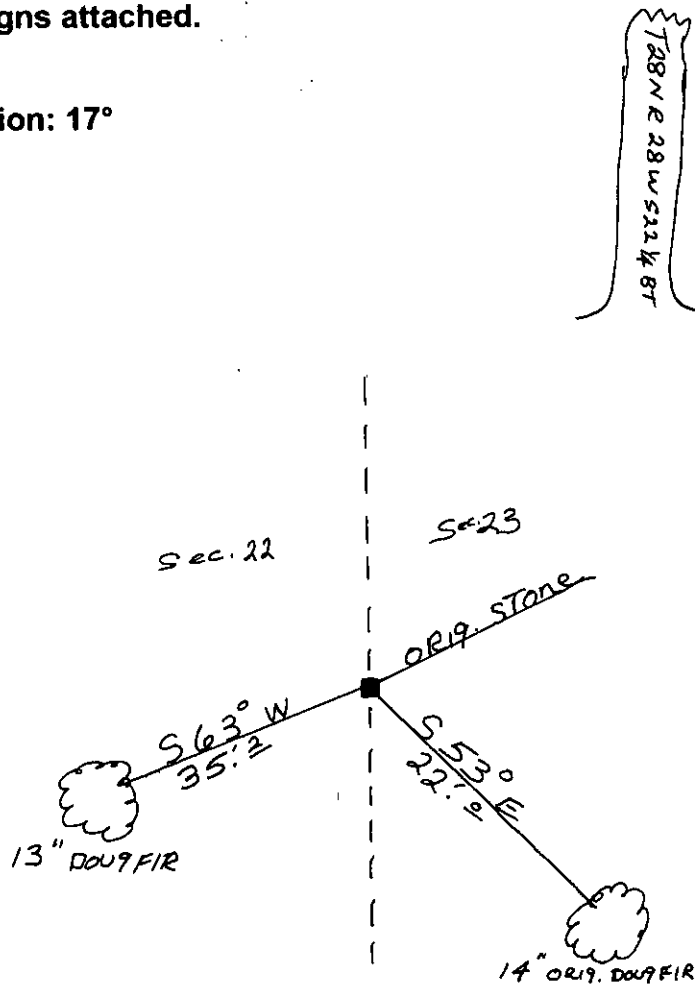
Perpetuation :

Established one (1) new Bearing Tree; from which:

A douglas fir, 13 ins. in diam., bears S. 63° W., 35.2 ft. dist.

Painted 6 inch wide red bands around Bearing Trees with Bearing tree and warning signs attached.

Declination: 17°



Sketch of Corner

CERTIFICATION

I, Rick Shaver

certify the information shown herein is true and correct

Rick Shaver

Signature of Ground Party Chief

I, Ken E. Davis

certify that this Corner Record correctly represents work performed by Me or under my direction in compliance with the "Corner Recordation Act"

Ken E. Davis

Signature of Surveyor & Seal

Date 2/28/2000

Employer Ken Davis Surveying, Inc.

Section

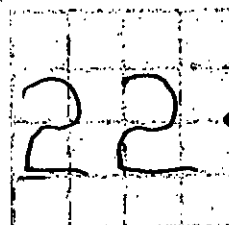
Office of Clerk and Recorder, County of Lincoln

This "corner record" was filed for record on 2/28/2000

was noted on the cross-index plat and is assigned page No. 10436

in book No. Coral M. Cummins

County Official del



Cross Index No. E 1/4 Sec. 22 T. 28 N., R. 28 W., PMM

• THIS CORNER