

CERTIFIED CORNER RECORDATION

Corner S E Sec. Cor. S 22 T. 28 N., R. 28 W., P.M.M. Lincoln County

Record :

1902 original GLO notes by Burton S. Adams.

"Set a granite stone, 20 x 12 x 10 ins., 15 ins. in the ground, for cor. of Secs. 22, 23, 26 and 27, marked with 2 notches on S. and 2 notches on E. edges; from which:

A pine, 6 ins. diam., bears N. 63°30' E., 33 lks. dist., marked T28N R28W S23 BT.

A pine, 8 ins. diam., bears S. 62°30' E., 45 lks. dist., marked T28N R28W S26 BT.

A pine, 6 ins. diam., bears S. 75°15' W., 26 lks. dist., marked T28N R28W S27 BT.

A pine, 5 ins. diam., bears N. 37°15' W., 270 lks. dist., marked T28N R28W S22 BT."

Found Evidence :

Original stone in place.

Found 4 pine Bearing Trees (fallen down; no good).

Perpetuation :

Established the following new Bearing Trees:

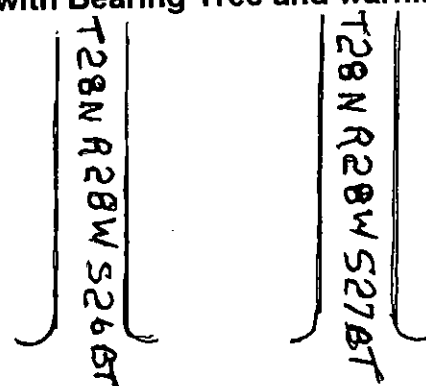
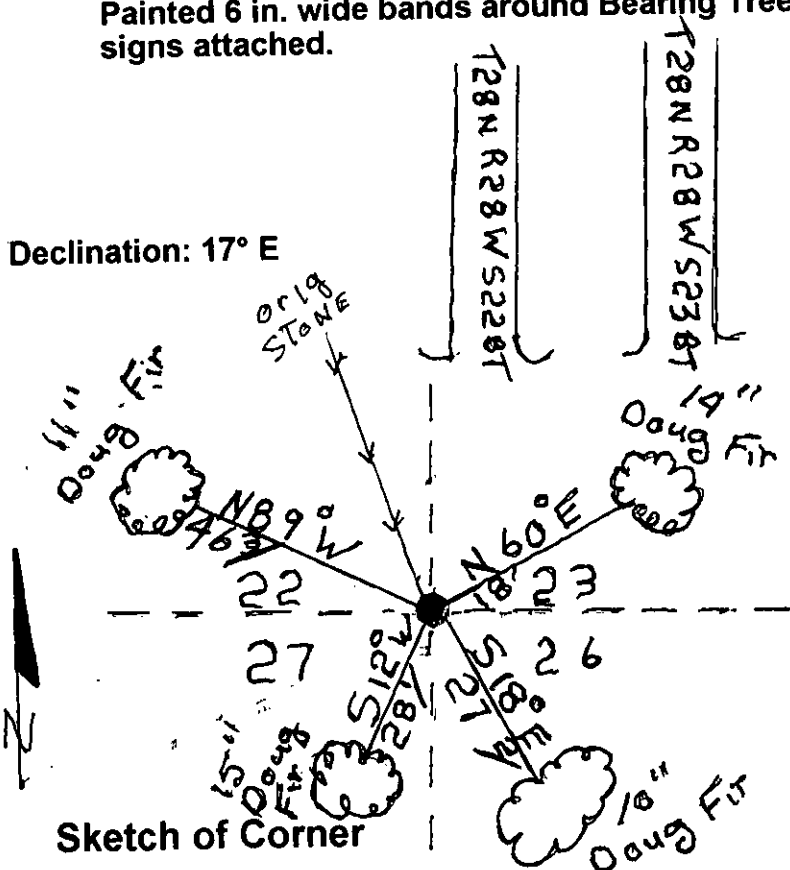
A douglas fir, 11 ins. diam., bears N. 89° W. 46.3 ft. dist., for Sec. 22.

A douglas fir, 14 ins. diam., bears N. 60° E. 18.0 ft. dist., for Sec. 23.

A douglas fir, 10 ins. diam., bears S. 18° E., 27.2 ft. dist., for Sec. 26.

A douglas fir, 15 ins. diam., bears S. 12° W., 28.1 ft. dist., for Sec. 27.

Painted 6 in. wide bands around Bearing Trees with Bearing Tree and warning signs attached.



CERTIFICATION

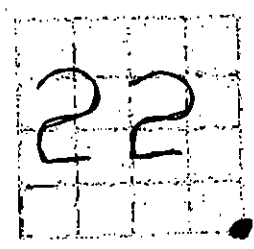
I, George R. Clark
 certify the information shown herein is true and correct
 Signature of Ground Party Chief
 I, Kenneth Davis
 certify that this corner record correctly represents work performed by me under my direction in compliance with the "Corner Recordation Act"
 Signature of Surveyor & Seal
 DAVIS
 4975-S
 Employer: SLR Surveying, Inc.

Office of Clerk and Recorder, County of Lincoln

This "corner record" was filed for record on 2/29/2000 was noted on the cross-index plat and is assigned page No. 10426

in book No. Coral M. Cummins
County Official

Section



Cross Index No. S E Sec. Cor. S 22 T. 28 N., R. 28 W., PMM

● THIS CORNER