

# CERTIFIED CORNER RECORDATION

Corner 1/4 Cor. S 9/10 T. 28 N., R. 28 W., P.M.M. Lincoln County

## Record :

1902 GLO Township Subdivision by B. Adams

40.00 chs. "Set a Limestone, 18x12x4 ins. 12 ins. in the ground, for 1/4 Sec. Cor. marked 1/4 on W. face, from which:

A fir, 11 ins. diam. bears N 35°15' E, 58 lks. dist. marked 1/4 S10 BT.

A tamarack, 20 ins. diam. bears N 49° W, 124 lks. dist. marked 1/4 S9 BT.

## Found Evidence :

The corner for Sec. 9 and 10 monumented with a limestone 16x12x3½ ins., firmly set 9 ins. in the ground, marked 1/4 on the W. face, from which:

A Douglas Fir 34 ½ ins. diam. bears N 33° E, 41.30 ft. dist. (record N 35°15' E, 38.28 ft.), with overgrown face.

A Western Larch 30 ¾ ins. diam. bears N 39° W, 119.90 ft. dist. (record N 49° W, 81.84 ft.) with overgrown face.

## Perpetuation :

At the found stone monument position, we replaced it with a 2 ½ inch diam. alum. pipe, 30 ins. long, 25 ins. in the ground, with a 3 ¼ inch dia. alum. cap marked as shown below:

Paint overgrown faces red and 6 inch wide bands around both existing Bearing Trees.

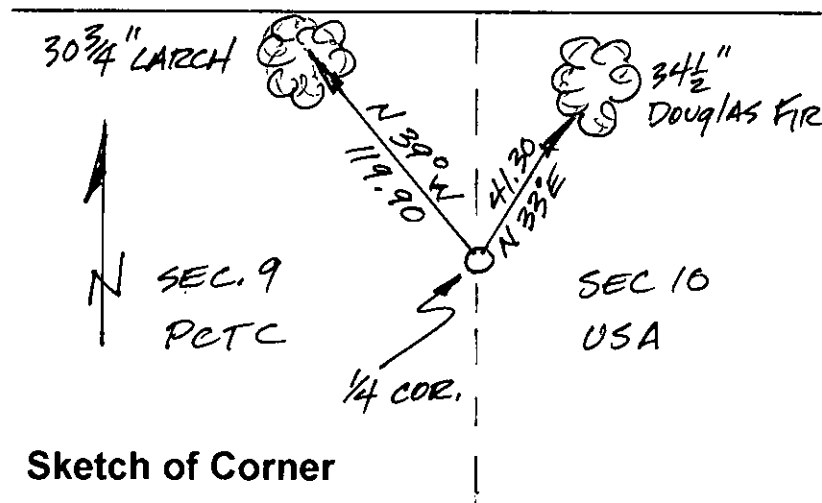
Attached Bearing Tree and Attention Land Survey Monument signs to both trees.

Set a steel post 6 ft. long, 2 ft. in the ground, which bears N 3.00 ft. dist., with attached Property and Land Survey Monument decals.

Raise a collar of stone 2 ft. diam., 1 ft. high, around set monument.

Bury the original stone alongside the set alum. monument.

Declination: 18° East



Sketch of Corner

## CERTIFICATION

I, John Damon

certify the information shown herein is true and correct

John Damon  
Signature of Ground Party Chief

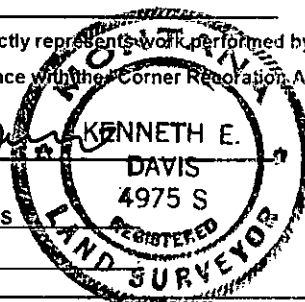
I, Kenneth E. Davis

certify that this Corner Record correctly represents work performed by me or, under my direction in compliance with the "Corner Restoration Act" (70-22-101, et seq., M.C.A.)

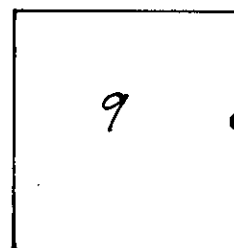
Kenneth E. Davis  
Signature of Surveyor & Seal

Date: \_\_\_\_\_ Reg. No. 4975-S

Employer: Davis Surveying, Inc.



## Section 9



Office of Clerk and Recorder, County of Lincoln

This "corner record" was filed for record on 8-3-98

was noted on the cross-index plat and is assigned page No. 10144

in book No. \_\_\_\_\_  
Coral M. Cummings  
County Official

Cross Index No. 1/4 Cor. S 9/10 T. 28 N., R. 28 W., PMM

• THIS COR