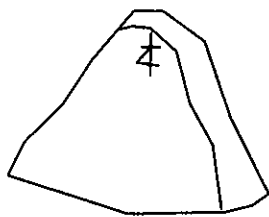
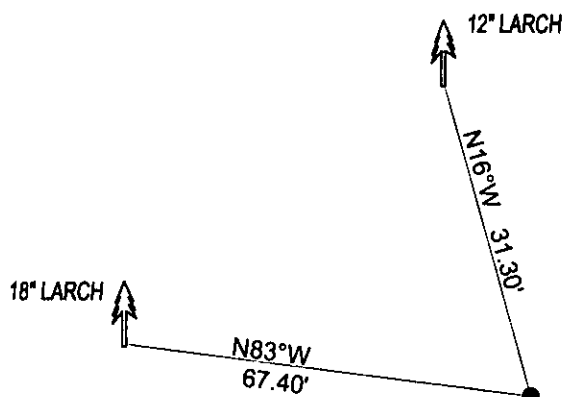


CERTIFIED CORNER RECORDATION

Corner N 1/4 SEC. 29 T. 28N R. 27W P.M.M. County LINCOLN

FOUND: ORIGINAL STONE 8x3x6 ABOVE GROUND, WITH 1/4 ON NORTH FACE, FROM WHICH:
12" LARCH BEARS N16°W 31.30' SCRIBE OVERGROWN.
18" LARCH BEARS N83°W 67.40' SCRIBE OVERGROWN.

MAINTENANCE: REMOVED BRUSH FROM CORNER AREA.
ATTACHED BT TAGS AND PAINTED A RED 6" BAND AND SCRIBE RED



SKETCH OF CORNER

CERTIFICATION

I, DAN CROFT
certify the information shown herein is true and correct.

Signature Ground Party Chief

I, MARC J. CARSTENS
certify that this Corner Record correctly represents work
performed by me or under my direction in compliance with
the "Corner Recordation Act" (70-22-101, et seq., M.C.A.)

Signature of Surveyor & Seal



Date: 10-2012 Reg. No. 5940 LS

Employer: CARSTENS LAND SURVEYING

Office of Clerk and Recorder, County of LINCOLN . This "corner

record" was filed for rec: 241460 BOOK: CCR CC&R'S PAGE: 11991 Pages: 1

was noted on the cross- RECORDED: 10/24/2012 10:40 KOI: CC&R'S

book No. TAMMY D. LAUER CLERK AND RECORDER

FEE: \$0.00

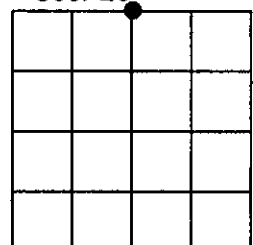
BY: *[Signature]*

FOR: CARSTENS LAND SURVEYING P.O. BOX 1374, POLSON, MONTANA

Cross Index No. R-7 T. 28N R. 27W PMM

Adopted July 1, 1981, Montana Board of Professional Engineers & Land Surveyors

Sec. 29



• corner this sheet