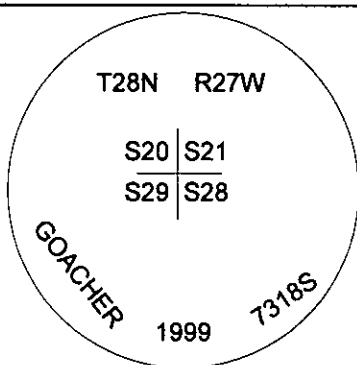
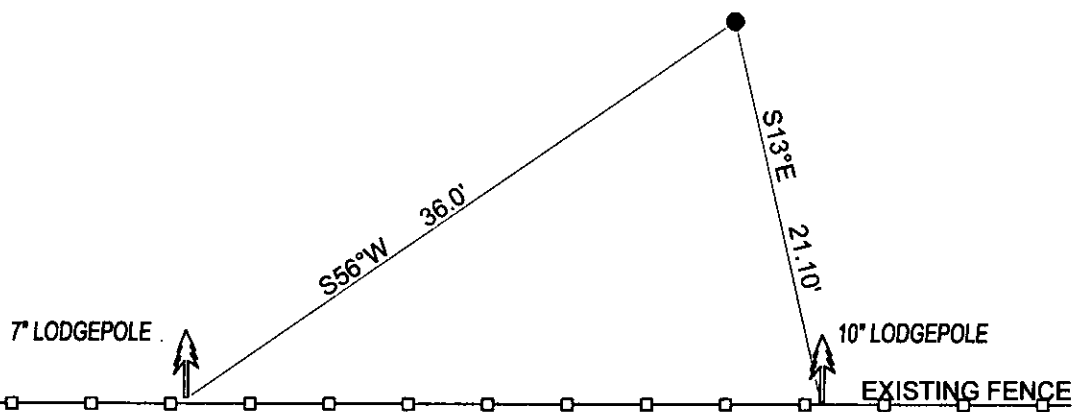


CERTIFIED CORNER RECORDATION

Corner NE CORNER SEC.29 T. 28N R. 27W P.M.M. County LINCOLN

FOUND: 3 1/4" ALUM CAP STAMPED AS SHOWN, FROM WHICH:
10" LODGEPOLE IN FENCE LINE BEARS S13°E 21.10'.
7" LODGEPOLE IN FENCE LINE BEARS S56°W 36.0'.

MAINTENANCE: REMOVED BRUSH FROM CORNER AREA.
SET 5 FOOT STEEL POST 1 FOOT WEST OF CORNER
ATTACHED BT TAGS AND PAINTED A RED 6" BAND.



SKETCH OF CORNER

CERTIFICATION

I, DAN CROFT
certify the information shown herein is true and correct.

Signature Ground Party Chief

I, MARC J. CARSTENS
certify that this Corner Record correctly represents work
performed by me or under my direction in compliance with
the "Corner Recordation Act" (70-22-101, et seq., M.C.A.)

Signature of Surveyor & Seal

Date: 10-2012 Reg. No. 5940 LS
Employer: CARSTENS LAND SURVEYING



Office of Clerk and Recorder, County of LINCOLN . This "corner

record" was filed for record on 241459 BOOK: CCR CC&R'S PAGE: 11990 Pages: 1
STATE OF MONTANA LINCOLN COUNTY
was noted on the cross-index RECORDED: 10/24/2012 10:35 KOI: CC&R'S
TAMMY D. LAUER CLERK AND RECORDER
book No. FEE: \$0.00 BY: Dennis Denny
FOR: CARSTENS LAND SURVEYING P.O. BOX 1374, POLSON, MONTANA
Cross Index No. R-9 T. 28N R. 27W PMM

Adopted July 1, 1981, Montana Board of Professional Engineers & Land Surveyors

Sec. 29

• corner this sheet