

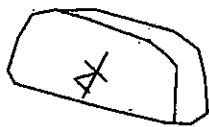
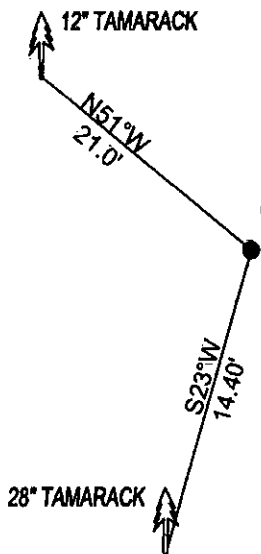
CERTIFIED CORNER RECORDATION

Corner S1/4 CORNER SEC.28 T. 28N R. 27W P.M.M. County LINCOLN

RECORD G.L.O. : SET A LIMESTONE 12x10x6, 8" INTO THE GROUND WITH 1/4 ON NORTH FACE, FROM WHICH:
 5" PINE BEARS N23°E 21.12' SCRIBED 1/4 S BT.
 5" PINE BEARS S41°W 3.30' SCRIBED 1/4 S BT.

FOUND : ORIGINAL STONE 10x5x5 ABOVE GROUND WITH 1/4 ON NORTH, FROM WHICH:
 28" TAMARACK BEARS S23°W 14.40' SCRIBED RM.
 12" TAMARACK BEARS N51°W 21.0' SCRIBE OVERGROWN.

MAINTENANCE:
 PAINTED BT'S WITH A RED 6" BAND AND SCRIBE RED
 SET 5 FOOT STEEL POST 2 FEET EAST FROM CORNER.



SKETCH OF CORNER

CERTIFICATION

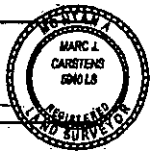
I, DAN CROFT
 certify the information shown herein is true and correct.

Signature Ground Party Chief

I, MARC J. CARSTENS
 certify that this Corner Record correctly represents work performed by me or under my direction in compliance with the "Corner Recordation Act" (70-22-101, et seq., M.C.A.)

Signature of Surveyor & Seal

Date: 12-2010 Reg. No. 5940 LS
 Employer: CARSTENS LAND SURVEYING



Office of Clerk and Recorder, County of LINCOLN . This "corner record" was filed for record on 230618 BOOK: CCR CC&R'S PAGE: 11744 Pages: 1

was noted on the cross-index plat STATE OF MONTANA LINCOLN COUNTY
 RECORDED: 01/05/2011 3:35 KOI: CC&R'S
 TAMMY D. LAUER CLERK AND RECORDER
 book No. _____ FEE: \$0.00 BY: Hanni Lauer Deputy
 TO: CARSTENS LAND SURVEYING P.O. BOX 1374, POLSON, MONTANA

Cross Index No. V-11 T. 28N R. 27W PMM

Sec. 28

• corner this sheet