

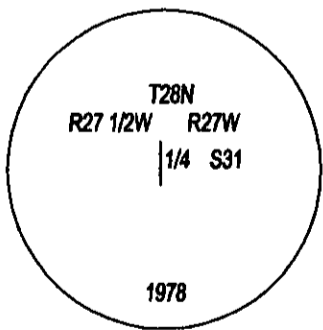
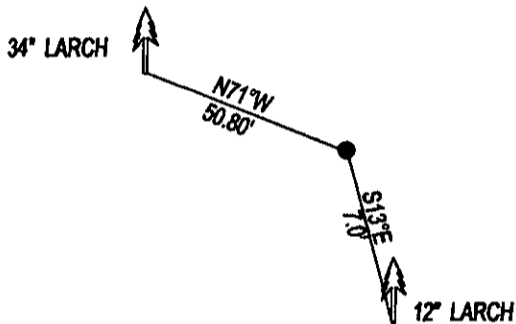
CERTIFIED CORNER RECORDATION

Corner W 1/4 CORNER SECTION 31 T. 28N R. 27W P.M.M. County LINCOLN

FOUND: 3 1/4 INCH BRASS 6" ABOVE GROUND, STAMPED AS SHOWN, FROM WHICH:

- A 12" LARCH BEARS S13°E, 7.0' SCRIBE OVER GROWN.
- A 34" LARCH BEARS N71°W, 50.80' SCRIBE OVER GROWN.

MAINTENANCE: ATTACHED BY TAGS TO ALL BEARING TREES AND PAINTED A 6" BAND.



SKETCH OF CORNER

CERTIFICATION

DAN CROFT

certify the information shown herein is true and correct.

Signature Ground Party Chief

MARC J. CARSTENS

certify that this Corner Record correctly represents work performed by me or under my direction in compliance with the "Corner Recordation Act" (70-22-101, et seq., M.C.A.)

[Signature]
Signature of Surveyor & Seal



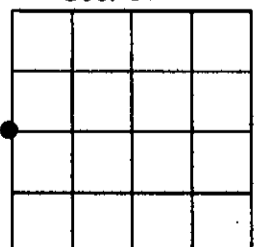
Date: 7-2009 Reg. No. 5940 LS

Employer: CARSTENS LAND SURVEYING

Office of Clerk and Recorder County of LINCOLN . This "corner
 record" was filed for record 220226 BOOK: CCR CC&R'S PAGE: 11307 Pages: 1
 was noted on the cross-index STATE OF MONTANA LINCOLN COUNTY
 book No. _____ RECORDED: 07/13/2009 9:00 KOI: CC&R'S
 TO: CARSTENS LAND SURVEYING BY: *Jeanne Dunne*
 Deputy

Cross Index No. X-1 T. 28N R. 27 W PMM

Sec. 31



• corner this sheet