

CERTIFIED CORNER RECORDATION

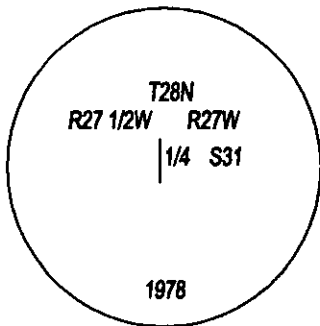
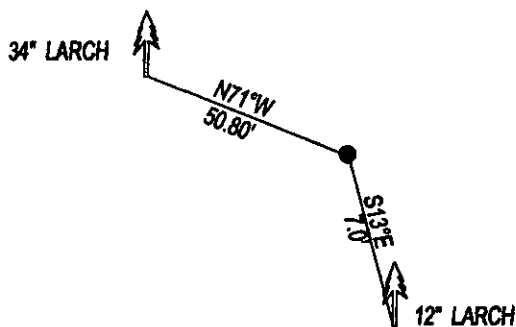
Corner W 1/4 CORNER SECTION 31 T. 28N R. 27W P.M.M. County LINCOLN

FOUND: 3 1/4 INCH BRASS 6" ABOVE GROUND, STAMPED AS SHOWN, FROM WHICH:

A 12" LARCH BEARS S13°E, 7.0' SCRIBE OVER GROWN.

A 34" LARCH BEARS N71°W, 50.80' SCRIBE OVER GROWN.

MAINTENANCE: ATTACHED BT TAGS TO ALL BEARING TREES AND PAINTED A 6" BAND.



SKETCH OF CORNER

CERTIFICATION

DAN CROFT

certify the information shown herein is true and correct.

Signature Ground Party Chief

MARC J. CARSTENS

certify that this Corner Record correctly represents work performed by me or under my direction in compliance with the "Corner Recordation Act" (79-22-101, et seq., M.C.A.)

[Signature]
Signature of Surveyor & Seal



Date: 7-2009 Reg. No. 5940 LS

Employer: CARSTENS LAND SURVEYING

Office of Clerk and Recorder County of LINCOLN This "corner

220226 BOOK: CCR CC&R'S PAGE: 11307 Pages: 1

record" was filed for record STATE OF MONTANA LINCOLN COUNTY

was noted on the cross-index RECORDED: 07/13/2009 9:00 KOI: CC&R'S

book No. _____

FEE: \$0.00

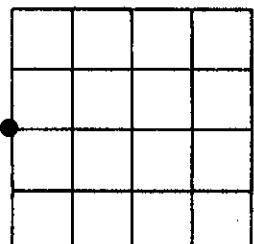
BY: [Signature]

TO: CARSTENS LAND SURVEYING

Cross Index No. X-1 T. 28N R. 27 W PMM

Adopted July 1, 1981, Montana Board of Professional Engineers & Land Surveyors

Sec. 31



• corner this sheet