

CERTIFIED CORNER RECORDATION

Corner N 1/4 Cor S 21 T. 28 N. R. 27 W. P.M.M. LINCOLN County

I. Record: 1891 GLO survey by Newton Orr :Set a slate rock 15x10x5 ins., 10 ins. in the ground, marked 1/4 on N. face from which:

- A pine, 18ins. diam. bears S.47°E. 7 lks. dist. (4.62 ft.)
- A pine, 10 ins. diam. bears N.28°E. 9 lks. dist. (5.94 ft.)

II. Found: A slate stone 15x8x5 ins. 6 ins. above ground firmly set marked 1/4 on the North face from which:

- A Ponderosa pine, 12 ins. diam. bears N.30°E., 5.60 ft. dist. with visible scribed face.
- A Ponderosa pine, 17 ins. diam. bears S.50°E., 5.50 ft. dist. with visible scribed face.

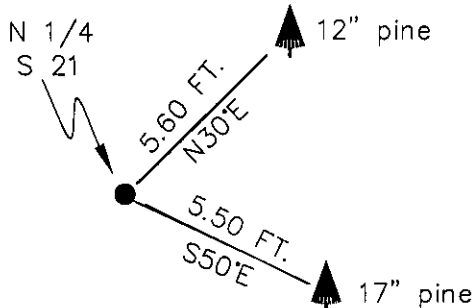
III. Perpetuation: We leave original found stone monument in place and scribe an "X" top center of stone monument.

Painted faces and 6 in. wide red bands to all bearing trees and attached Land Survey Monument and Bearing Tree signs.

Magnetic declination: 20° East assumed

Equipment used: Hand compass and loggers tape

Kootenai Surveyors Inc., 314 California Av., Libby, MT. 59923 (406) 293-4354



SKETCH OF CORNER

CERTIFICATION

I, Kenneth Kern
certify the information shown herein is true and correct.

Signature Ground Party Chief

I, Alvah F. Hughes
certify that this Corner Record correctly represents work performed by me or under my direction in compliance with the "Corner Recordation Act" (70-22-101, et seq. M.C.A.)

Signature of Surveyor & Seal
Alvah F. Hughes 7322LS

Date: 12/08/04 Reg. No. 7322LS

Employer: Kootenai Surveyors Inc.

Office of Clerk and Recorder, County of Lincoln This "corner

record" was filed for record on

190115 BOOK: CCR CC&R'S PAGE: 10897 Pages: 1

was noted on the cro STATE OF MONTANA LINCOLN COUNTY

book No. _____

RECORDED: 12/06/2005 9:07 KOI: CC&R'S

CORAL M. CUMMINGS CLERK AND RECORDER

FEE: \$0.00

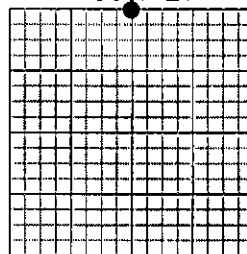
BY: Alvah F. Hughes

TO: AL HUGHES-SURVEYOR P.O. BOX 393, LIBBY MT 59923

Cross Index No. N 09 T. 28N. R. 27W. P.M., MT

Adopted July 1, 1981, Montana Board of Professional Engineers & Land Surveyors

Sec. 21



• corner this sheet