

CERTIFIED CORNER RECORDATION

Corner N 1/4 Cor S 21 T 28 N. R. 27 W. P.M.M. LINCOLN County

I. Record: 1891 GLO survey by Newton Orr :Set a slate rock 15x10x5 ins., 10 ins. in the ground, marked 1/4 on N. face from which:

- A pine, 18ins. diam. bears S.47°E. 7 lks. dist. (4.62 ft.)
- A pine, 10 ins. diam. bears N.28°E. 9 lks. dist. (5.94 ft.)

II. Found: A slate stone 15x8x5 ins. 6 ins. above ground firmly set marked 1/4 on the North face from which:

- A Ponderosa pine, 12 ins. diam. bears N.30°E., 5.60 ft. dist. with visible scribed face.
- A Ponderosa pine, 17 ins. diam. bears S.50°E., 5.50 ft. dist. with visible scribed face.

III. Perpetuation: We leave original found stone monument in place and scribe an "X" top center of stone monument.

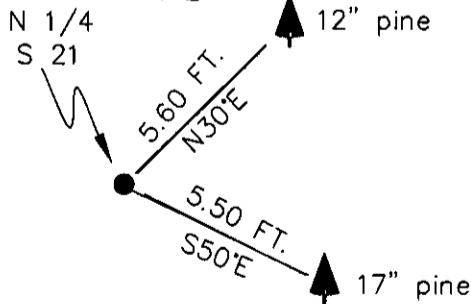
Painted faces and 6 in. wide red bands to all bearing trees and attached Land Survey Monument and Bearing Tree signs.

Magnetic declination: 20° East assumed

Equipment used: Hand compass and loggers tape

Kootenai Surveyors Inc., 314 California Av., Libby, MT. 59923 (406) 293-4354

CLASSIC ROCK - PCTC



SKETCH OF CORNER

CERTIFICATION

I, Kenneth Kern
certify the information shown herein is true and correct.
Kenneth Kern
 Signature Ground Party Chief

I, Alvah F. Hughes
certify that this Corner Record correctly represents work performed by me or under my direction in compliance with the "Corner Recordation Act" (70-22-101, et seq., M.C.A.)
Alvah F. Hughes
 Signature of Surveyor & Seal

Date: 12/08/04 Reg. No. 7322-LS
 Employer: Kootenai Surveyors Inc.

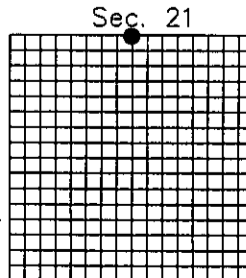
ALVAH F. HUGHES
7322 LS
 REGIS.

Office of Clerk and Recorder, County of Lincoln This "corner

record" was filed for record
 was noted on the cross-index
 book No. _____

188867 BOOK: CCR CC&R'S PAGE: 10850 Pages: 1
 STATE OF MONTANA LINCOLN COUNTY
 RECORDED: 10/18/2005 8:31 KOI: CC&R'S
 CORAL M. CUMMINGS CLERK AND RECORDER
 FEE: \$0.00 BY: *Coral M. Cummings*
 TO: KOOTENAI SURVEYORS INC. P.O. BOX 393, LIBBY, MT 59923

Cross Index No. N 11 T. 28N. R. 27W. P.M., MT



• corner this sheet

Adopted July 1, 1981, Montana Board of Professional Engineers & Land Surveyors