

STATE OF MONTANA LINCOLN COUNTY
RECORDED: 12/14/2004 12:40 KOI: CC&R'S
CORAL M. CUMMINGS CLERK AND RECORDER
FEE: \$0.00 BY:
TO: FILED

CERTIFIED CORNER RECORDATION

Corner N 1/4 Cor S 21 T 28 N. R. 27 W. P.M.M. LINCOLN County

I. Record: 1891 GLO survey by Newton Orr :Set a slate rock 15x10x5 ins., 10 ins. in the ground, marked 1/4 on N. face from which:

- A pine, 18ins. diam. bears S.47°E. 7 lks. dist. (4.62 ft.)
- A pine, 10 ins. diam. bears N.28°E. 9 lks. dist. (5.94 ft.)

II. Found: A slate stone 15x8x5 ins. 6 ins. above ground firmly set marked 1/4 on the North face from which:

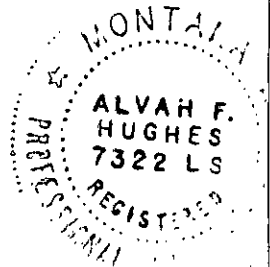
- A Ponderosa pine, 12 ins. diam. bears N.30°E., 5.60 ft. dist. with visible scribed face.
- A Ponderosa pine, 17 ins. diam. bears S.50°E., 5.50 ft. dist. with visible scribed face.

III. Perpetuation: We leave original found stone monument in place and scribe an "X" top center of stone monument.

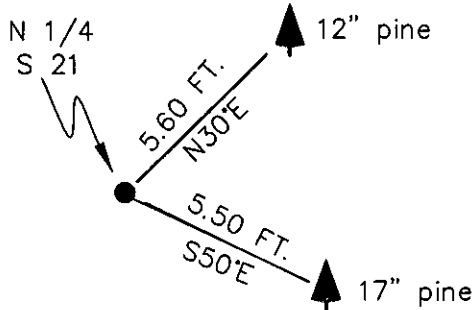
Painted faces and 6 in. wide red bands to all bearing trees and attached Land Survey Monument and Bearing Tree signs.

Magnetic declination: 20' East assumed

Equipment used: Hand compass and loggers tape



Kootenai Surveyors Inc., 314 California Av., Libby, MT. 59923 (406) 293-4354



SKETCH OF CORNER

CERTIFICATION

I, Kenneth Kern
certify the information shown herein is true and correct.
Kenneth Kern
Signature Ground Party Chief

I, Alvah F. Hughes
certify that this Corner Record correctly represents work performed by me or under my direction in compliance with the "Corner Recordation Act" (78-22-101, et seq., M.C.A.)
Alvah F. Hughes 7322LS
Signature of Surveyor & Seal

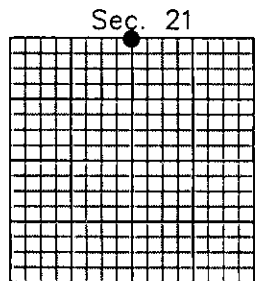
Date: 12/08/04 Reg. No. 7322-LS
Employer: Kootenai Surveyors Inc.

Office of Clerk and Recorder, County of Lincoln. This "corner

record" was filed for 181260 BOOK: CCR CC&R'S PAGE: 10712 Pages: 1
was noted on the crc STATE OF MONTANA LINCOLN COUNTY
book No. RECORDED: 12/14/2004 12:40 KOI: CC&R'S
CORAL M. CUMMINGS CLERK AND RECORDER
FEE: \$0.00 BY: *Jeanne Stump*
TO: FILED Deputy

Cross Index No. N 09 11 T. 28N. R. 27W. P.M., MT

Adopted July 1, 1981, Montana Board of Professional Engineers & Land Surveyors



• corner this sheet