

CERTIFIED CORNER RECORDATION

Corner NE Sec Cor S 21 T 28 N. R. 27 W. P.M.M. LINCOLN County

I. Record: 1891 GLO survey by Newton Orr :Set a Limestone 12x12x5 ins., 8 ins. in the ground, marked with 3 notches on S. and E. edges from which:

- A pine, 24 ins. diam. bears N.12°E. 56 lks. dist. (36.96 ft.)
- A pine, 36 ins. diam. bears S.25°E. 36 lks. dist. (23.76 ft.)
- A pine, 24 ins. diam. bears S.29°W. 37 lks. dist. (24.42 ft.)
- A pine, 24 ins. diam. bears N.75°W. 89 lks. dist. (58.74 ft.)

II. Found: A Limestone 12x12x5 ins. 5 ins. above ground firmly set marked with 3 notches on South and East edges from which:

- A down Ponderosa pine, 40 ins. diam. bears S.25°E., 23.70 ft. dist. with visible scribed face.
- A down Ponderosa pine, 30ins. diam. bears N.75°W., 58.70 ft. dist. with visible scribed face.
- A down Ponderosa pine, 26 ins. diam. bears S.29°W., 24.20 ft. dist. with visible scribed face.
- A Ponderosa pine snag, 30 ins. diam. bears N12°E., 36.90 ft. dist. with visible face.
- A Douglas fir, 9 ins. diam. bears N45°W., 12.50 ft. dist. scribed RM.
- A Douglas fir, 9 ins. diam. bears S26°E., 11.10 ft. dist. scribed RM.
- A Douglas fir, 9 ins. diam. bears S40°W., 7.50 ft. dist. scribed RM.

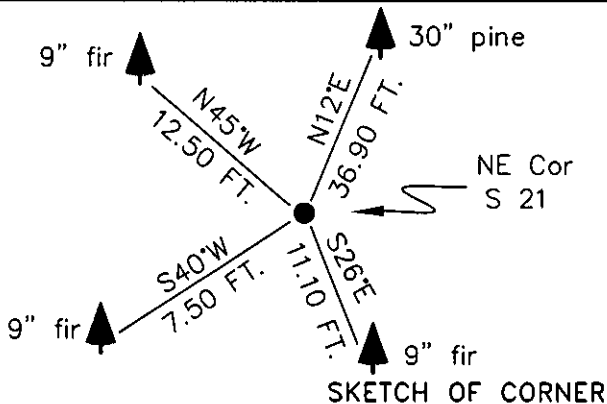
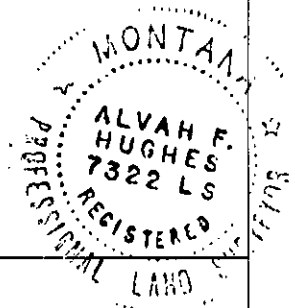
III. Perpetuation: We leave original found stone monument in place and scribe an "X" top center of stone monument.

Painted faces and 6 in. wide red bands to all bearing trees and attached Land Survey Monument and Bearing Tree signs to all live standing trees.

Magnetic declination: 20° East assumed

Equipment used: Hand compass and loggers tape

Kootenai Surveyors Inc., 314 California Av., Libby, MT. 59923 (406) 293-4354



SKETCH OF CORNER

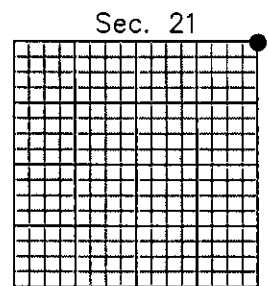
CERTIFICATION
I, Kennth Kern
certify the information shown herein is true and correct.
Kennth Kern
Signature Ground Party Chief
I, Alvah F. Hughes
certify that this Corner Record correctly represents work performed by me or under my direction in compliance with the Corner Recordation Act (70-22-101, et seq., M.C.A.)
Alvah F. Hughes, 7322
Signature of Surveyor & Seal
Date: 12/08/04 Reg. No. 7322-LS
Employer: Kootenai Surveyors Inc.

Office of Clerk and Recorder, County of Lincoln. This "corner

record" was filed 181259 BOOK: CCR CC&R'S PAGE: 10711 Pages: 1
was noted on the STATE OF MONTANA LINCOLN COUNTY
book No. RECORDED: 12/14/2004 12:35 KOI: CC&R'S
CORAL M. CUMMINGS CLERK AND RECORDER
FEE: \$0.00 BY: Glennie Lunn

Cross Index No. N 13 T. 28N. R. 27W. P.M., MT

Adopted July 1, 1981, Montana Board of Professional Engineers & Land Surveyors



• corner this sheet