

CERTIFIED CORNER RECORDATION

Corner NE cor. of S21 T. 28 N. R. 27 W. P.M.M. LINCOLN County

I. Record: 1891 - GLO survey - (N. Orr), set a limestone 12"x12"x5", 8" in the ground, marked with 3 notches on the South edge and on the East edge from which:

- A pine, 24" in diameter, bears N12°E, 56 links (36.96 ft), marked T28N, R27W, S15, B.T.
- A pine, 36" in diameter, bears S25°E, 36 links (23.76 ft), marked T28N, R27W, S22, B.T.
- A pine, 24" in diameter, bears S29°W, 37 links (24.42 ft), marked T28N, R27W, S21, B.T.
- A pine, 24" in diameter, bears N75°W, 89 links (58.74 ft), marked T28N, R27W, S16, B.T.

II. Found: A 12"x12"x5" limestone, firmly set in place, protruding 5" above ground with 3 notches on the South edge and 3 notches on the East edge.

- A 9" fir bears S26°E, 11.10 ft, scribed RM at base. (Other private surveyor)
- A 9" fir bears N45°W, 12.50 ft, scribed RM at base. (Other private surveyor)
- A 9" fir bears S40°W, 7.50 ft, scribed RM at base. (Other private surveyor)
- A 30" pine bears N12°E, 36.90 ft, visible faces. (Original)
- A down 26" pine bears S29°W, 24.20 ft, dead snag, visible scribe. (Original)
- A down 30" pine bears N75°W, 58.70 ft, visible scribe. (Original)
- A down 40" pine bears S25°E, 23.70ft, visible scribe. (Original)

III. Perpetuation: Scribed an "X" on top center of limestone and left it in place.

No available trees in SE quad due to logging.

"Land Survey Monument" signs are in place on "RM" trees set by "normile". No recordation found in Lincoln County Courthouse.

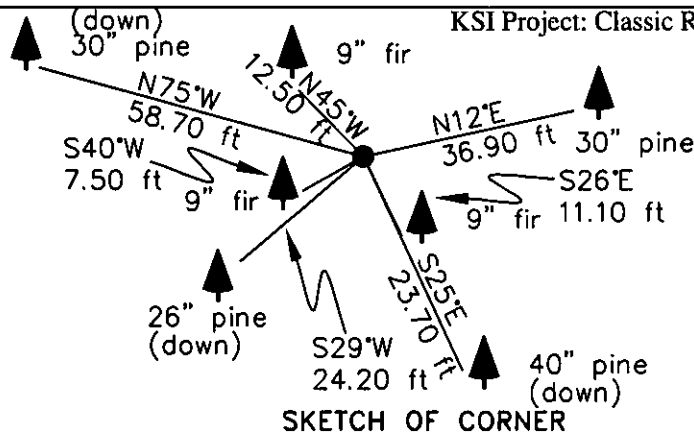
Placed USFS LSM signs on back of all live bearing trees.

Painted red bands around all bearing trees.

Magnetic declination: 20° East

Equipment used: Hand compass and loggers tape

Kootenai Surveyors Inc., 314 California Av., Libby, MT. 59923 (406) 293-4354



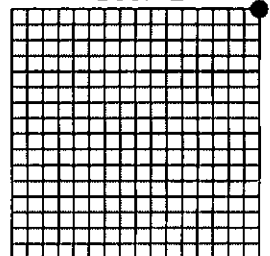
SKETCH OF CORNER

CERTIFICATION

I, Kenneth Kern
certify the information shown herein is true and correct.
Kenneth R Kern
Signature Ground Party Chief
I, Alvah F. Hughes
certify that this Corner Record correctly represents work performed by me or under my direction in compliance with the "Corner Recordation Act" (70-22-101, M.C.A.)
Alvah F Hughes
Signature of Surveyor & Seal
Date: 11/12/04 Reg. No. 7322-LS
Employer: Kootenai Surveyors Inc.

180695 BOOK: CCR CC&R'S PAGE: 10704 Pages: 1
Of: STATE OF MONTANA LINCOLN COUNTY
RECORDED: 11/16/2004 1:25 KOI: CC&R'S
rec CORAL M. CUMMINGS CLERK AND RECORDER
wa FEE: \$0.00 BY: James Kern in
TO: FILED
book 10704
County Official

Sec. 21



• corner this sheet

Cross Index No. N 13 T. 28N R. 27W P.M., MT

Adopted July 1, 1981, Montana Board of Professional Engineers & Land Surveyors