

INSTRUCTIONS

1. Original and/or subsequent record used to evaluate the corner position.
2. Description of evidence found, note discrepancies in the record, state method of establishing lost or obliterated corners.
3. Description of monument and accessories set to perpetuate the corner position.
4. Sketch of corner, show all pertinent data which can best be shown in a sketch example, corner marking, topography ties, position of accessories.
5. Certification must be signed and sealed by Land Surveyor registered in the State of Montana.
6. Fill in Cross Index & Section Diagram at bottom of sheet.

CERTIFIED CORNER RECORDATION

Corner West 1/4 Corner Section 7 T. 28N R. 27W P.M.M. Lincoln County

GLO Record: Set a limestone 15x8x6 ins., 10 ins. in the ground for 1/4 Sec. Cor. marked 1/4 on W. face
From Which: A tamarack 20 ins. diam. bears N.30°E. 32 lks. dist. marked 1/4 S BT
A pine 7 ins. diam. bears S.71°W. 78 lks. dist. marked 1/4 S BT

Fall, 1998 and Spring, 1999

Corner search conducted by Kootenai National Forest personnel as well as PCI survey crew finds no evidence of original corner. The corner and accessories appear to have been lost to logging activity.

June, 1999

At single proportion position between the NW and SW corners of Section 7, we set a 1" diam.x30" long alum. rod, 18" in the ground, topped with a 3-1/4" alum. cap marked as shown below, and erect a 18" diam. ring of stone around corner. Set galv. post with Land Survey Monument decal 1.7 ft. North of Corner.

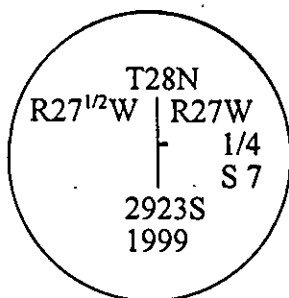
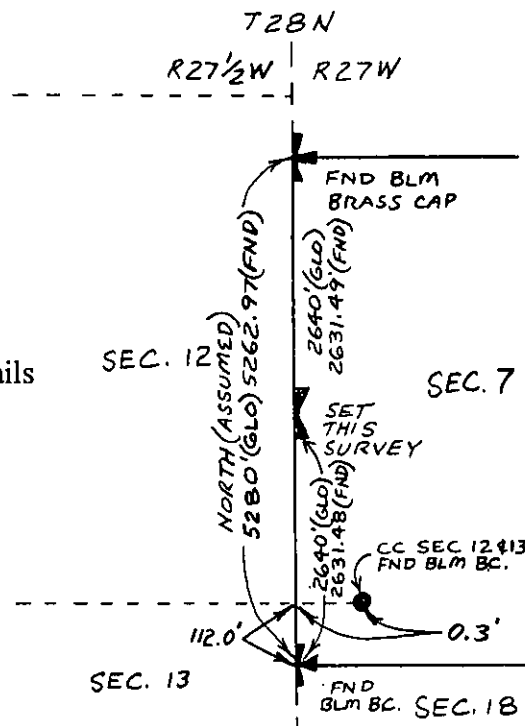
The following new bearing trees were established:

10" Larch brs. S.66°E., 27.5 feet, mrkd: 1/4 S7 BT

14" Fir brs. N.39°E., 5.45 feet, mrkd: 1/4 S7 BT

18° E. Declination

Survey Details



SKETCH OF CORNER

CERTIFICATION

I, Matt Jacobson
certify the information shown herein is true and correct.

Matt Jacobson
Signature Ground Party Chief

I, Richard A. Ainsworth
certify that this Corner Record correctly represents work performed by me or under my direction in compliance with the "Corner Recordation Act" (70-22-101, et seq., M.C.A.)

Richard A. Ainsworth
Signature of Surveyor & Seal

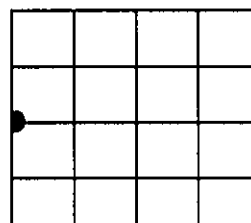
Date: June, 1999 Reg. No. 2923 S

Employer: Professional Consultants, Inc.

Office of Clerk and Recorder, County of Lincoln. This "corner record" was filed for record on 7-16-99 was noted on the cross-index plat and is assigned page No. 10348, in book No. Coral M. Cumming By REC

County Official

Sec. 7



Cross Index No. G-1 T. 28N R. 27W PMM

• - Corner this sheet