

# CERTIFIED CORNER RECORDATION

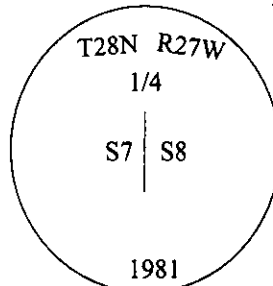
Corner 1/4 Secs. 7 & 8 T. 28N R. 27W P.M., MT Lincoln County

- I. 1891 G.L.O. Record by Newton Orr: Set a limestone, 18x12x8 ins., 12 ins. in the ground, for 1/4 sec. cor. of secs. 7 and 8, mkd. "1/4" on the N. face.

Established two bearing trees:

A pine, 5 ins. diam., bears N43°E, 13 lks. dist., mkd "1/4 S BT".  
A tamarack, 5 ins. diam., bears N53°W, 4 lks. dist., mkd "1/4 S BT".

1981 B.L.M. Record by Joseph E. French: The 1/4 sec. cor. of secs. 7 and 8, monumented with a limestone, 18x12x8 ins., firmly set, 12 ins. in the ground, mkd. "1/4" on the N. face, and witnessed by the remains of the original bearing trees. At the corner point, set an aluminum post, 30 ins. long, 2 1/2 ins. diam., 24 ins. in the ground, with an aluminum cap, mkd. as shown.



Established one new bearing tree and bury the original stone alongside and raise a mound of stone, 3.0 ft. diam., around the aluminum post.

- II. Found a 2 1/2 in. diam. aluminum pipe, firmly set, in a mound of stone, with a 3 1/4 in. diam. aluminum cap, mkd. as shown, and witnessed by the remains of one of the original bearing tree and the B.L.M. bearing trees.

from which:

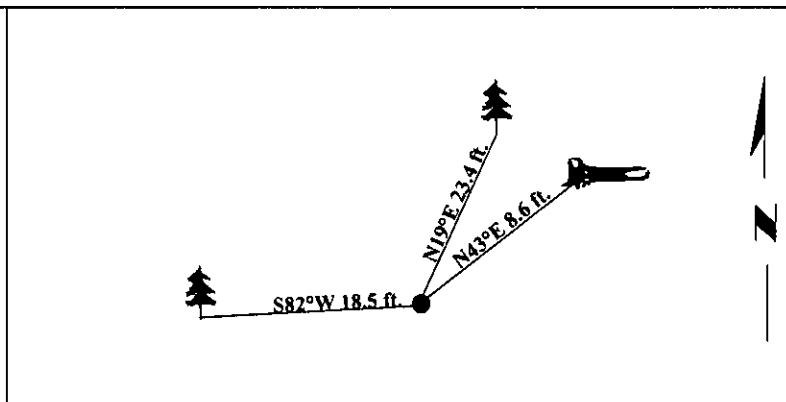
A stump w/ log alongside, 15 ins. diam., bears N43°E, 8.6 ft. dist., with a healed face. (GLO-rec)  
A larch, 14 ins. diam., bears S82°W, 18.5 ft. dist., with a healed face. (BLM-record)

- III. Established one new bearing tree:

A spruce, 15 ins. diam., bears N19°E, 23.4 ft. dist., mkd. "1/4 S8 BT".

Painted bearing trees and attached Land Survey Monument and Bearing Tree signs.

Magnetic Declination: 20° East

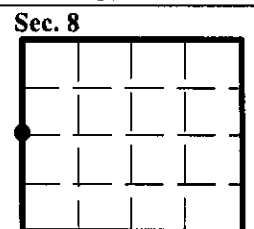


SKETCH OF CORNER

CERTIFICATION	
I. <u>Rex O. Rice</u>	certify the information shown herein is true and correct.
<i>Rex O. Rice</i>	
I. <u>Steven A. Boyer</u>	certify that this Corner Record correctly represents work performed by me or under my direction in compliance with the "Corner Recodification Act" (70-22-101, et seq., M.S.A.)
<i>Steven A. Boyer</i>	
Date: <u>6/11/98</u>	Signature of Surveyor & Seal
Reg. No.: <u>9750LS</u>	
Employer: <u>U.S. FOREST SERVICE</u>	

Office of Clerk and Recorder, County of Lincoln. This "corner record" was filed for record on 11-18-98 and was noted on the cross-index plat and is assigned page No. 1027 in book No. \_\_\_\_\_.

*Carol M. Cumming*  
County Official



• - corner this sheet