

CERTIFIED CORNER RECORDATION

Corner 1/4 Secs. 6 & 7 T. 28N R. 27W P.M., MT Lincoln County

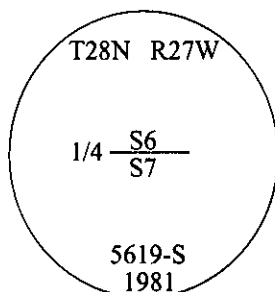
- I. 1891 G.L.O. Record by Newton Orr: Set a post, 3 ft. long, 3 ins. square, 24 ins. in the ground, for 1/4 sec. cor. of secs. 7 and 8, mkd. "1/4 S." on the N. face.

Established two bearing trees:

A pine, 7 ins. diam., bears S88°E, 34 lks. dist., mkd "1/4 S BT".

A pine, 7 ins. diam., bears S77°W, 13 lks. dist., mkd "1/4 S BT".

1981 Certified Corner Recordation by Stephen D. Staab, No. 5619 S: Found a post hole, no remains, witnessed by the remains of both original bearing trees. At the corner point, as determined from original evidence found, set a 30 ins. long aluminum pipe, 2 1/2 in. diam. aluminum pipe, 16 ins. in the ground, with aluminum cap mkd. as shown.



Established two new bearing trees and raise a 4.0 ft. diam. collar of stone around the monument.

- II. Found a 2 1/2 in. diam. aluminum pipe, firmly set, in a mound of stone, protruding 18 ins. above the ground, with a 3 1/4 in. diam. aluminum cap, mkd. as shown, and witnessed by the remains of both the original bearing trees and the U.S.F.S. bearing trees.

from which:

A fallen pine, 15 ins. diam., bears S88°E, 22.4 ft. dist., with a healed face. (GLO-record)

A fallen larch, 14 ins. diam., bears S14°W, 57.9 ft. dist., with visible scribe. (USFS-record)

A rootcrown, S77°W, 8.6 ft. dist. (GLO-record)

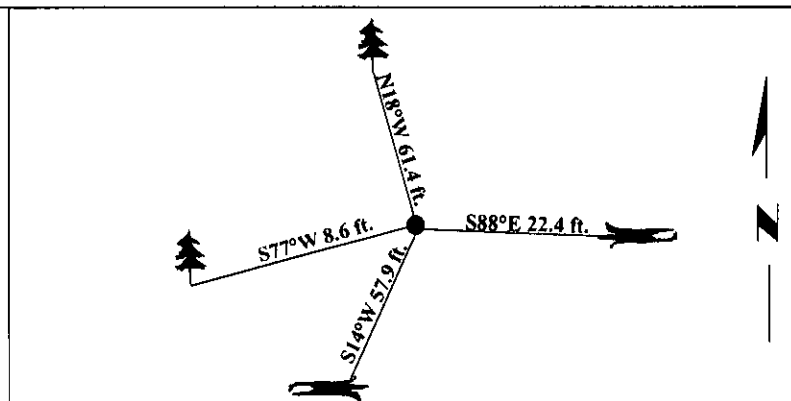
A larch, 14 ins. diam., bears N18°W, 61.4 ft. dist., with visible scribe. (USFS-record)

- III. Established one new bearing tree:

A larch, 21 ins. diam., bears S61°W, 56.6 ft. dist., mkd. "1/4 S7 BT".

Painted bearing trees and attached Land Survey Monument and Bearing Tree signs.

Magnetic Declination: 20° East



SKETCH OF CORNER

CERTIFICATION

I, Rex O. Rice
certify the information shown herein is true and correct.

Rex O. Rice

I, Steven A. Boyer
certify that this Corner Record correctly represents work performed by me or under my direction in compliance with the "Corner Recordation Act" (70-22-101, et seq., M.C.A.)

Steven A. Boyer
Signature of Surveyor & Seal

Date: 6/15/98

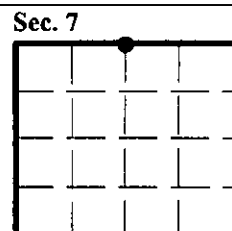
Reg. No.: 9750LS

Employer: U.S. FOREST SERVICE

MONTANA
STEVEN A. BOYER
9750LS
REGISTERED
LAND SURVEYOR

Office of Clerk and Recorder, County of Lincoln. This "corner record" was filed for record on 10/19/98 and was noted on the cross-index plat and is assigned page No. 10254 in book No. _____.

Coral M. Cummings B. PLS
County Official



• - corner this sheet