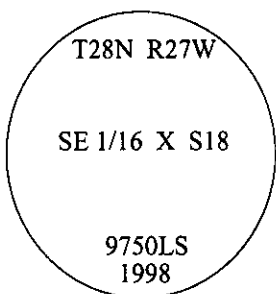


CERTIFIED CORNER RECORDATION

Corner SE 1/16 Sec. 18 T. 28N R. 27W P.M., MT Lincoln County

- I. No previous history.
- II. No evidence found.
- III. Set by survey, a 3/4 in. diam. aluminum driveable rod, 30 ins. long, 22 ins. in the ground, with a 3 1/4 in. diam. aluminum cap, mkd. as shown.

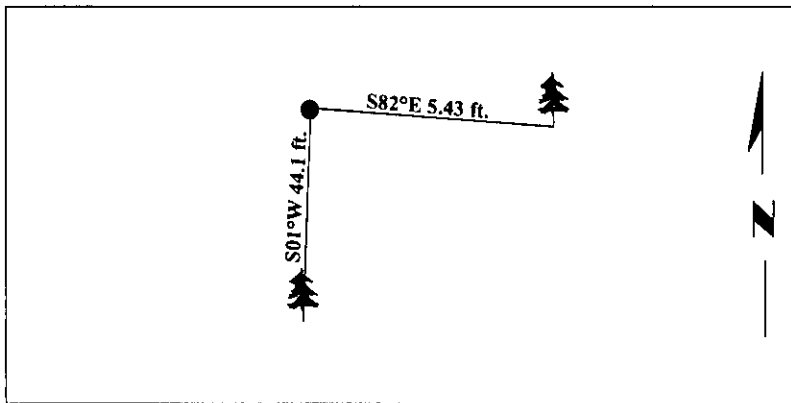


Established two bearing trees:

- A pine, 10 ins. diam., bears S82°E, 5.43 ft. dist., mkd. "SE 1/16 S18 BT".
- A pine, 14 ins. diam., bears S01°W, 44.1 ft. dist., mkd. "SE 1/16 S18 BT".

Painted bearing trees and attached Land Survey Monument and Bearing Tree signs.

Magnetic Declination: 20° East



SKETCH OF CORNER

CERTIFICATION

I, **Thomas M. Hommel**
certify the information shown herein is true and correct.

Thomas M. Hommel

I, **Steven A. Boyer**
certify that this Corner Record correctly represents work performed by me or under my direction in compliance with the "Corner Recordation Act" (70-22-101, et. Seq., M.C.A.)

Steven A. Boyer
Signature of Surveyor & Seal

Date: 8/24/98

Reg. No.: 9750LS

Employer: U.S. FOREST SERVICE

MONTANA

★

STEVEN A. BOYER

9750LS

REGISTERED

LAND SURVEYOR

Office of Clerk and Recorder, County of Lincoln. This "corner record" was filed for record on 10/19/98 and was noted on the cross-index plat and is assigned page No. 10252 in book No. _____.

Carol M. Cummins
 County Official

