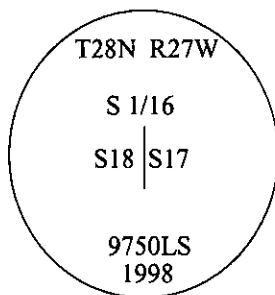


# CERTIFIED CORNER RECORDATION

Corner S 1/16 Secs. 17&18 T. 28N R. 27W P.M., MT Lincoln County

- I. No previous history.
- II. No evidence found.
- III. Set by survey, a 3/4 in. diam. aluminum driveable rod, 30 ins. long, 26 ins. in the ground, with a 3 1/4 in. diam. aluminum cap, mkd. as shown.

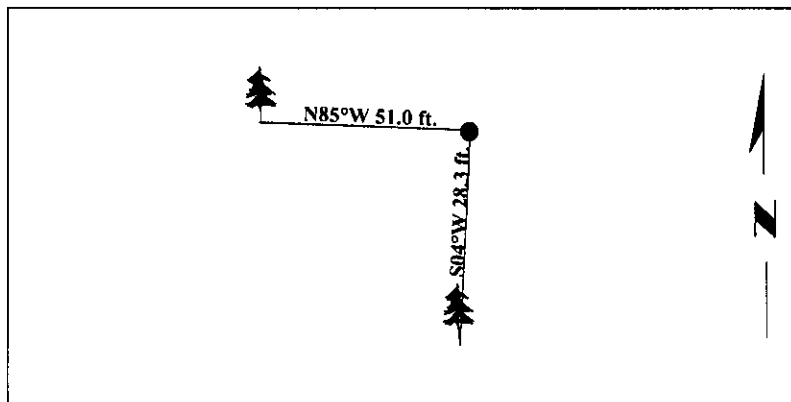


Established two bearing trees:

- A fir, 5 ins. diam., bears S04°W, 28.3 ft. dist., mkd. "S 1/16 S17 BT".
- A fir, 6 ins. diam., bears N85°W, 51.0 ft. dist., mkd. "S 1/16 S18 BT".

Painted bearing trees and attached Land Survey Monument and Bearing Tree signs.

Magnetic Declination: 20° East



SKETCH OF CORNER

**CERTIFICATION**

I, Thomas M. Hommel  
 certify the information shown herein is true and correct.

I, Steven A. Boyer  
 certify that this Corner Record correctly represents work performed by me or under my direction in compliance with the "Corner Recordation Act" (70-22-101, et seq., M.C.A.)

Signature of Surveyor & Seal

Date: 8/24/98

Reg. No.: 9750LS

Employer: U.S. FOREST SERVICE

STEVEN A. BOYER  
 9750LS  
 REGISTERED  
 LAND SURVEYOR

Office of Clerk and Recorder, County of Lincoln. This "corner record" was filed for record on 10/19/98 and was noted on the cross-index plat and is assigned page No. 102,51 in book No. \_\_\_\_\_

Coral M. Cummings, RLB  
 County Official

