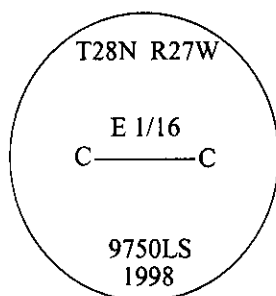


# CERTIFIED CORNER RECORDATION

Corner CE 1/16 Sec. 18 T. 28N R. 27W P.M., MT Lincoln County

- I. No previous history.
- II. No evidence found.
- III. Set by survey, a 3/4 in. diam. aluminum driveable rod, 30 ins. long, 26 ins. in the ground, with a 3 1/4 in. diam. aluminum cap, mkd. as shown.

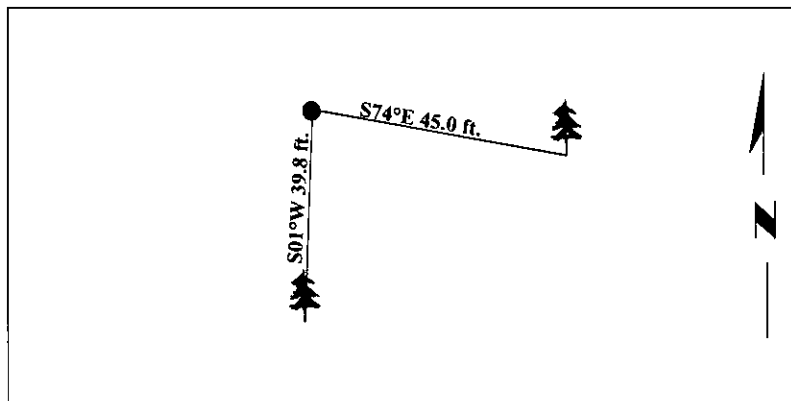


Established two bearing trees:

- A fir, 11 ins. diam., bears S74°E, 45.0 ft. dist., mkd. "CE 1/16 S18 BT".
- A larch, 6 ins. diam., bears S01°W, 39.8 ft. dist., mkd. "CE 1/16 S18 BT".

Painted bearing trees and attached Land Survey Monument and Bearing Tree signs.

Magnetic Declination: 20° East



SKETCH OF CORNER

**CERTIFICATION**

I, Thomas M. Hommel  
certify the information shown herein is true and correct.

Steven A. Boyer  
certify that this Corner Record correctly represents work performed by me or under my direction in compliance with the "Corner Recordation Act" (70-22-101, et seq., M.C.A.)

Signature of Surveyor & Seal: Steven A. Boyer

Date: 8/24/98

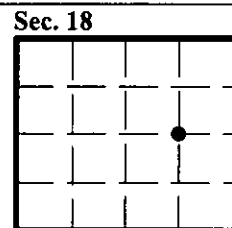
Reg. No.: 9750LS

Employer: U.S. FOREST SERVICE

**STEVEN A. BOYER**  
9750LS  
REGISTERED  
LAND SURVEYOR

Office of Clerk and Recorder, County of Lincoln. This "corner record" was filed for record on 10/19/98 and was noted on the cross-index plat and is assigned page No. 10250 in book No. \_\_\_\_\_

Coral M. Cummings By PLB  
County Official



• - corner this sheet