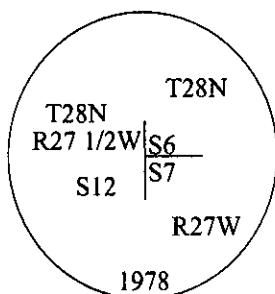


CERTIFIED CORNER RECORDATION

Corner S.C. Secs. 6 & 7 T. 28N R. 27W P.M., MT Lincoln County

- I. 1891 G.L.O. Record by Newton Orr: A point about 200 feet below top of mountain, set a limestone, 18x10x5 ins., 12 ins. in the ground, for cor. to secs. 1,6,7 and 12, mkd. with 1 notch on the N. and 5 notches on the S. edges. Established four bearing trees.
- 1902 Retracement Survey Record by Burton S. Adams et. al.: Fall 30 lks. E. of the cor. for secs. 1,6,7 and 12, which is a stone 10x5, 5 ins. above ground, mkd. and witnessed as described by the surveyor general, as this cor. will hereafter refer to secs. 6 and 7 only, I efface the marks from the S.W. and N.W. bearing trees.
- 1978 B.L.M. Record by Larry Christiansen et. al.: The cor. of secs. 6 and 7, on the W. bdy. of the Tp., monumented with a limestone, 15x10x7 ins., firmly set, 10 ins. in the ground, mkd. with 1 notch on the N. and 5 notches on the S. edges, and witnessed by the remains of the original bearing trees. At the corner point, set an iron post, 30 ins. long, 2 1/2 ins. diam., 22 ins. in the ground, with a brass cap, mkd. as shown.



Bury the original stone alongside and raise a flat mound of stone, 3.0 ft. diam., around the iron post.

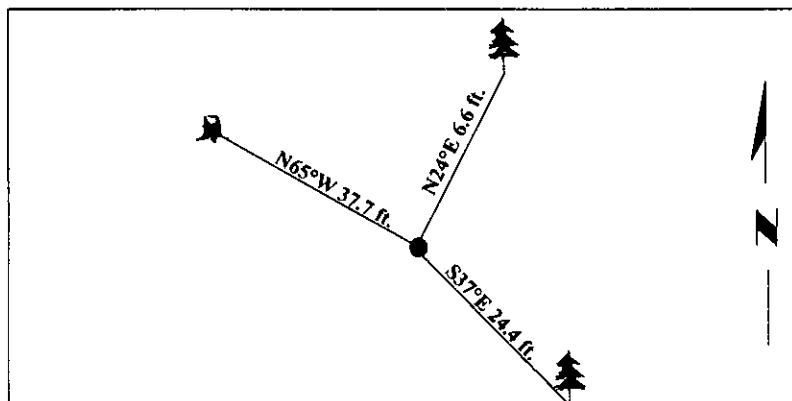
- II. Found a 2 1/2 in. diam. iron pipe, firmly set, protruding 5 ins. above the ground, with a 3 1/4 in. diam. brass cap, mkd. as shown, and witnessed by the remains of the original bearing trees.

from which:

- A fir, 35 ins. diam., bears N24°E, 6.6 ft. dist., with a healed face. (GLO-record)
- A fir, 25 ins. diam., bears S37°E, 24.4 ft. dist., with a healed face. (GLO-record)
- A decaying fir stump, bears N65°W, 37.7 ft. dist. (GLO-record-48 lks.-31.68 ft.)

- III. Painted bearing trees and attached Land Survey Monument and Bearing Tree signs.

Magnetic Declination: 20° East



SKETCH OF CORNER

CERTIFICATION

I, **Mark Federman**
certify the information shown herein is true and correct.

Mark Federman

I, **Steven A. Boyer**
certify that this Corner Record correctly represents work performed by me or under my direction in compliance with the "Corner Recordation Act" (70-22-101, et seq., M.C.A.)

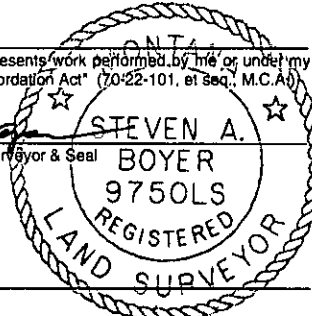
Steven A. Boyer **STEVEN A. BOYER**

Signature of Surveyor & Seal

Date: 6/15/98

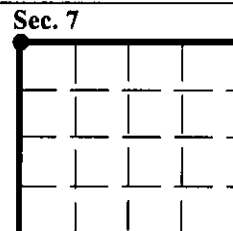
Reg. No.: 9750LS

Employer: U.S. FOREST SERVICE



Office of Clerk and Recorder, County of Lincoln. This "corner record" was filed for record on 10-6-98 and was noted on the cross-index plat and is assigned page No. 10234 in book No. _____.

Coral M. Cummings By PJB
 County Official



● - corner this sheet