

CERTIFIED CORNER RECORDATION

Corner S.C. Sec. 18 only T. 28N R. 27W P.M., MT Lincoln County

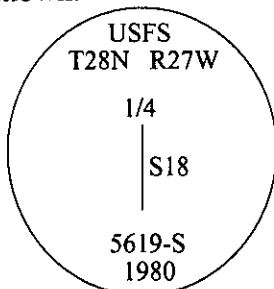
- I. 1891 G.L.O. Record by Newton Orr: A pine tree, 5 ins. diam., on line, which I marked "1/4 S" on W. side, for 1/4 sec. cor.

Established two bearing trees:

A tamarack, 6 ins. diam., bears N47°E, 9 lks. dist., mkd. "1/4 S BT".

A pine, 7 ins. diam., bears N41°W, 12 lks. dist., mkd. "1/4 S BT".

1980 Certified Corner Recordation by Stephen D. Staab, 5619 S: Found a leaning 25.0 ft. snag, with visible scribe, in record position and witnessed by the original bearing trees. At the corner point, as determined from the found evidence, set a 30 ins. long, 2 1/2 in. diam. aluminum pipe, 24 ins. in the ground, with a aluminum cap mkd. as shown.



*The found original bearing trees had some discrepancies in the record.

Bury the original monument alongside the aluminum pipe.

- II. Found a 2 1/2 in. diam. aluminum pipe, firmly set, protruding 2 ins. above the ground, with a 3 1/4 in. diam. aluminum cap, mkd. as shown, and witnessed by the remains of the original bearing trees.

from which:

A larch, 16 ins. diam., bears N52°E, 5.9 ft. dist., with overgrown face. (GLO-record-N47°E)

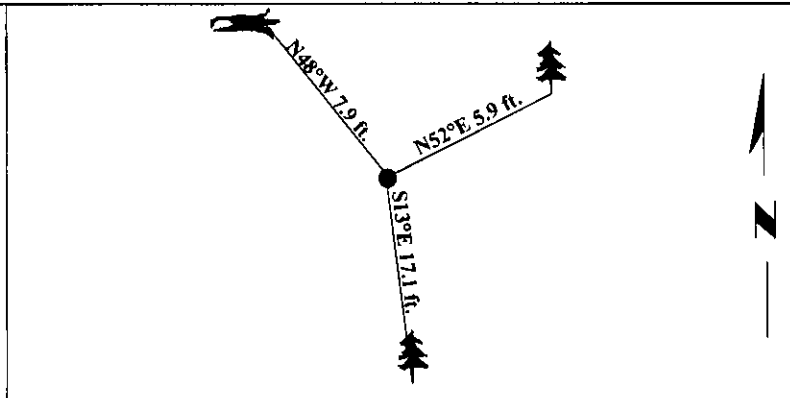
A down pine, 15 ins. diam., bears N48°W, 7.9 ft. dist., visible scribe. (GLO-record-N41°W)

- III. Established one new bearing tree:

A lodgepole pine, 7 in. bears S13°E, 17.1 ft. dist., mkd. "1/4 S18 BT".

Painted bearing trees and attached Land Survey Monument and Bearing Tree signs.

Magnetic Declination: 20° East



SKETCH OF CORNER

CERTIFICATION

I. Mark Federman

certify the information shown herein is true and correct.

Mark Federman

I. Steven A. Boyer

certify that this Corner Record correctly represents work performed by me or under my direction in compliance with the "Corner Recordation Act" (70-22-101, et seq., M.C.A.)

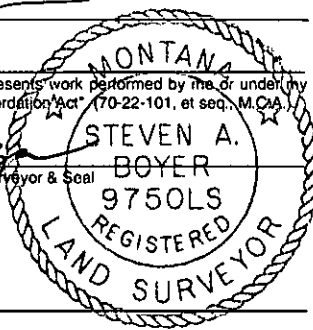
Steven A. Boyer

Signature of Surveyor & Seal

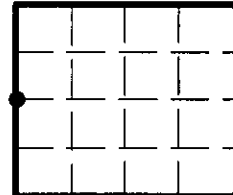
Date: 6/11/98

Reg. No.: 9750LS

Employer: U.S. FOREST SERVICE



Sec. 18



Office of Clerk and Recorder, County of Lincoln. This "corner record" was filed for

record on 10-6-98 and was noted on the cross-index plat and is assigned page No. 10229

in book No. _____

Coral M. Cummings By DUB
County Official

• - corner this sheet

Cross Index No.

L-01

T.

28N

R.

27W

P.M., MT