

# CERTIFIED CORNER RECORDATION

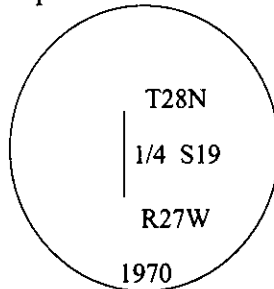
Corner S.C. Sec. 19 only T. 28N R. 27W P.M., MT Lincoln County

- I. 1891 G.L.O. Record by Newton Orr: Set a limestone, 15x8x5 ins., 10 ins. in the ground, for 1/4 sec. cor., mkd. "1/4" on W. face.

Established two bearing trees:

A tamarack, 36 ins. diam., bears N81°E, 37 lks. dist., mkd. "1/4 S BT".  
A pine, 16 ins. diam., bears N59°W, 34 lks. dist., mkd. "1/4 S BT".

1970 B.L.M. Record by Joseph E. French: The 1/4 sec. cor. of sec. 19 on the W. bdy. of the Tp., monumented with a limestone, 15x8x5 ins., firmly set, mkd. "1/4" on the W. face, and witnessed by the remains of the original bearing trees. At the corner point set an iron post, 30 ins. long, 2 1/2 ins. diam., 24 ins. in the ground, with brass cap mkd. as shown.



Established two new bearing trees and bury the original stone alongside the iron post.

- II. Found a 2 1/2 in. diam. iron pipe, firmly set, protruding 6 ins. above the ground, with a 3 1/4 in. diam. brass cap, mkd. as shown, and witnessed by the remains of the original bearing trees and the B.L.M. bearing trees.

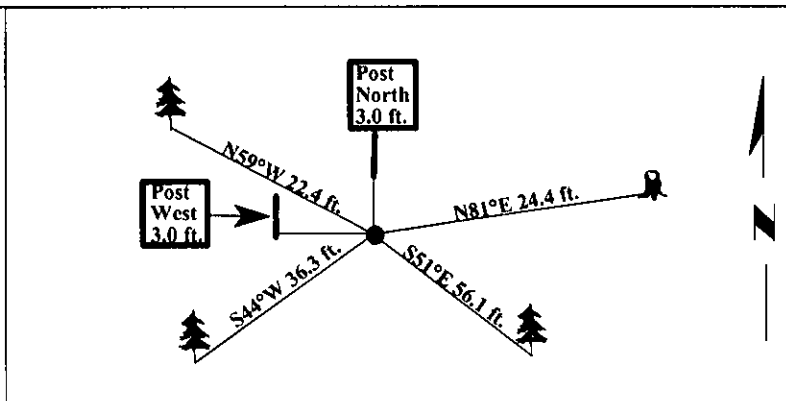
from which:

A larch stump, 32 ins. diam., bears N81°E, 24.4 ft. dist., with overgrown face. (GLO-record)  
A larch, 9 ins. diam., bears S51°E, 56.1 ft. dist., with overgrown face. (BLM-record)  
A larch, 10 ins. diam., bears S44°W, 36.3 ft. dist., with overgrown face. (BLM-record)  
A live pine, 20 ins. diam., bears N59°W, 22.4 ft. dist., with overgrown face. (GLO-record)

- III. Set two 6 ft. galvanized steel guard posts, W. and N., 3.0 ft. dist. of the corner, with Land Survey Monument and Property Boundary decals attached.

Painted bearing trees and attached Land Survey Monument and Bearing Tree signs.

Magnetic Declination: 20° East



SKETCH OF CORNER

## CERTIFICATION

I, Mark Federman  
certify the information shown herein is true and correct.

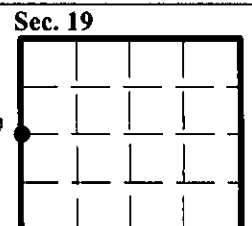
I, Steven A. Boyer  
certify that this Corner Record correctly represents work performed by me or under my direction in compliance with the "Corner Recordation Act" (70-22-101, et seq., M.C.A.)

Signature of Surveyor & Seal  
Steven A. Boyer  
STEVEN A. BOYER  
9750LS  
REGISTERED  
LAND SURVEYOR

Date: 6/11/98  
Reg. No.: 9750LS  
Employer: U.S. FOREST SERVICE

Office of Clerk and Recorder, County of Lincoln. This "corner record" was filed for record on 10-6-98 and was noted on the cross-index plat and is assigned page No. 10227 in book No.                     .

Coral M. Cunningham by DUB  
County Official



• - corner this sheet